



Alice's Road Phase 5

February 6, 2018 – Public Information Meeting

www.facebook.com/cityofwaukeeiowa

@CityofWaukee on Twitter

www.waukee.org





Welcome

- ❖ John Gibson, *Public Works Director*
- ❖ Rudy Koester, *Assistant Public Works Director*
- ❖ Brad Deets, *Development Services Director*
- ❖ Joshua DeBower, *Foth*





Agenda

- ❖ Project Background
- ❖ Project Schedule
- ❖ Project Overview
- ❖ Construction Staging



Project Background

❖ Previous Projects

- ▶ Diverging Diamond Interchange
- ▶ Four-Lane Section SE Ashworth Rd to SE University
- ▶ SE University Ave Widening
- ▶ Six-Lane Section SE University Ave to SE Olson Dr

❖ Current Project

- ▶ Phase 5: SE Olson Drive to NE Horizon Drive



Traffic Characteristics

❖ Projected Average Daily Traffic Volumes

- ▶ Current 12,000 vpd
- ▶ 2025 35,000 vpd
- ▶ 2035 40,000 vpd
- ▶ 2045 50,000 vpd



Project Schedule

❖ Phase 5

- ▶ Construction Letting – February 20, 2018
- ▶ Utility Coordination & Relocations
- ▶ Construction Commence – Spring 2018
- ▶ Alice's Construction Complete – Nov. 2018
- ▶ Hickman Construction Complete – May 2019



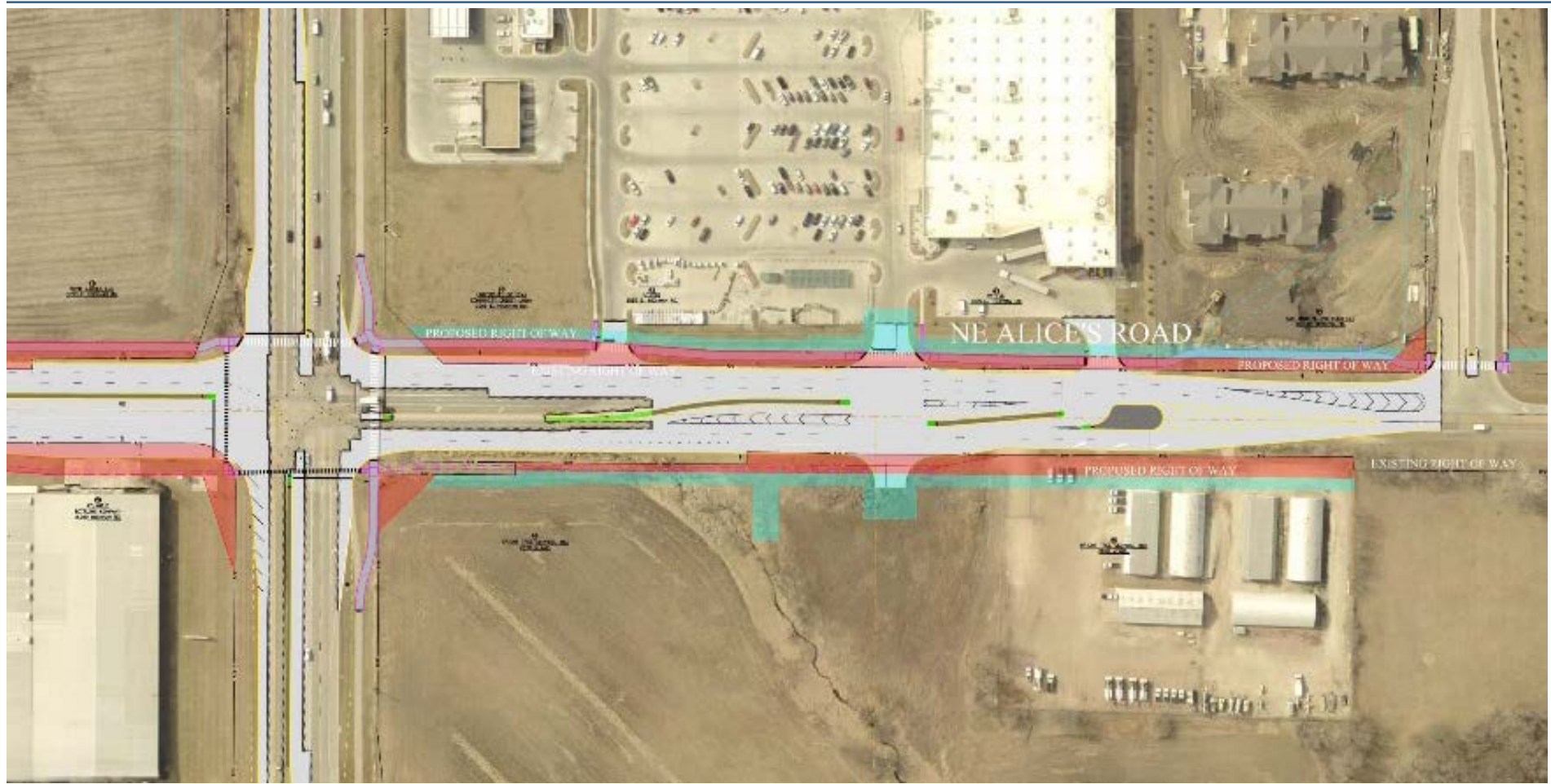
Project Overview



Project Overview



Project Overview





Construction Staging - Stage 1



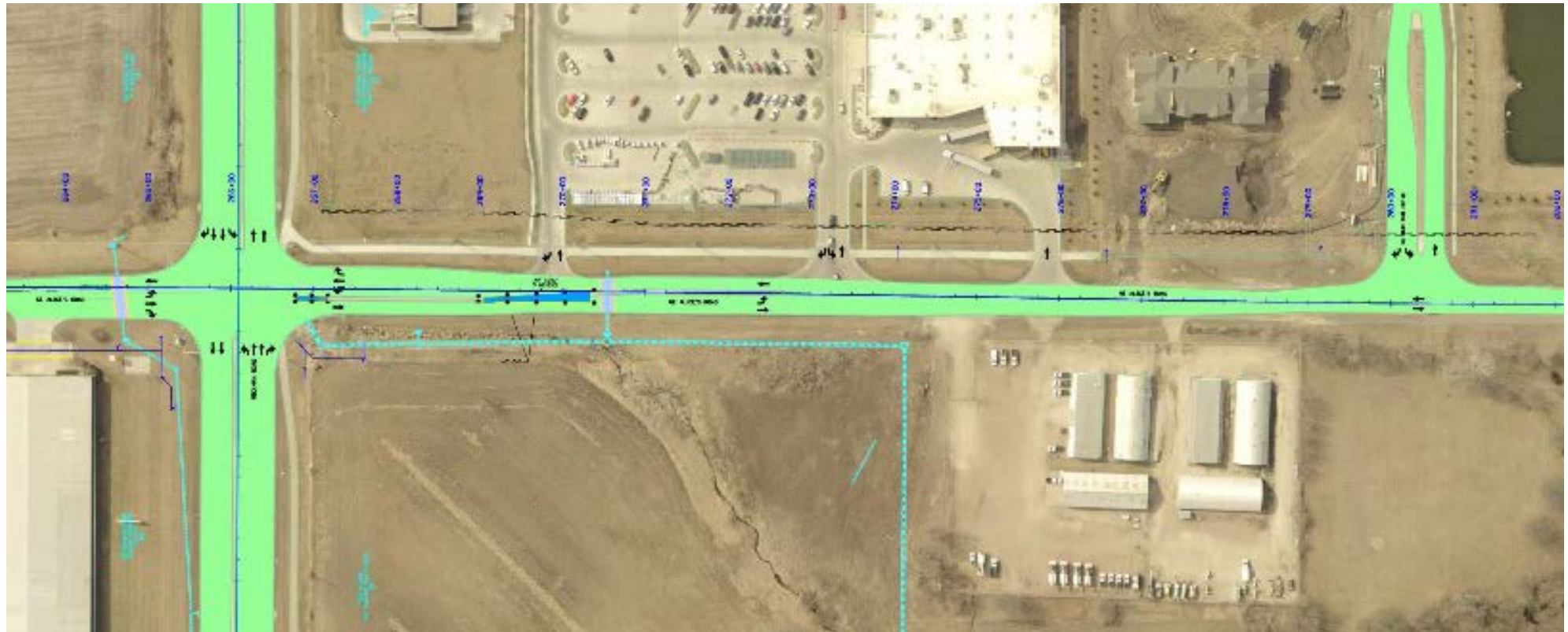


Construction Staging - Stage 1



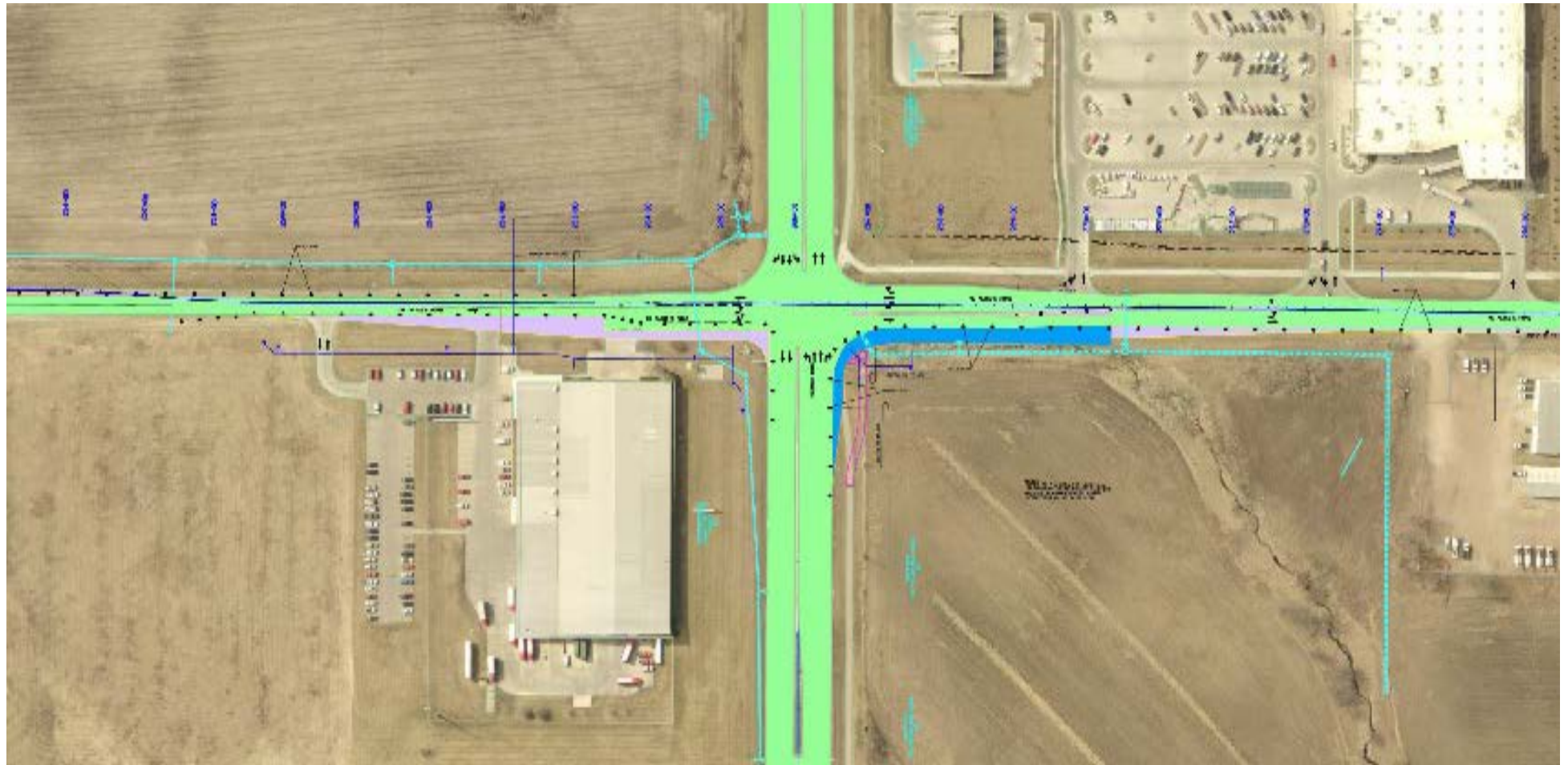


Construction Staging - Stage 1





Construction Staging - Stage 2





Construction Staging - Stage 3





Construction Staging - Stage 3





Construction Staging - Stage 3





Construction Staging - Stage 4



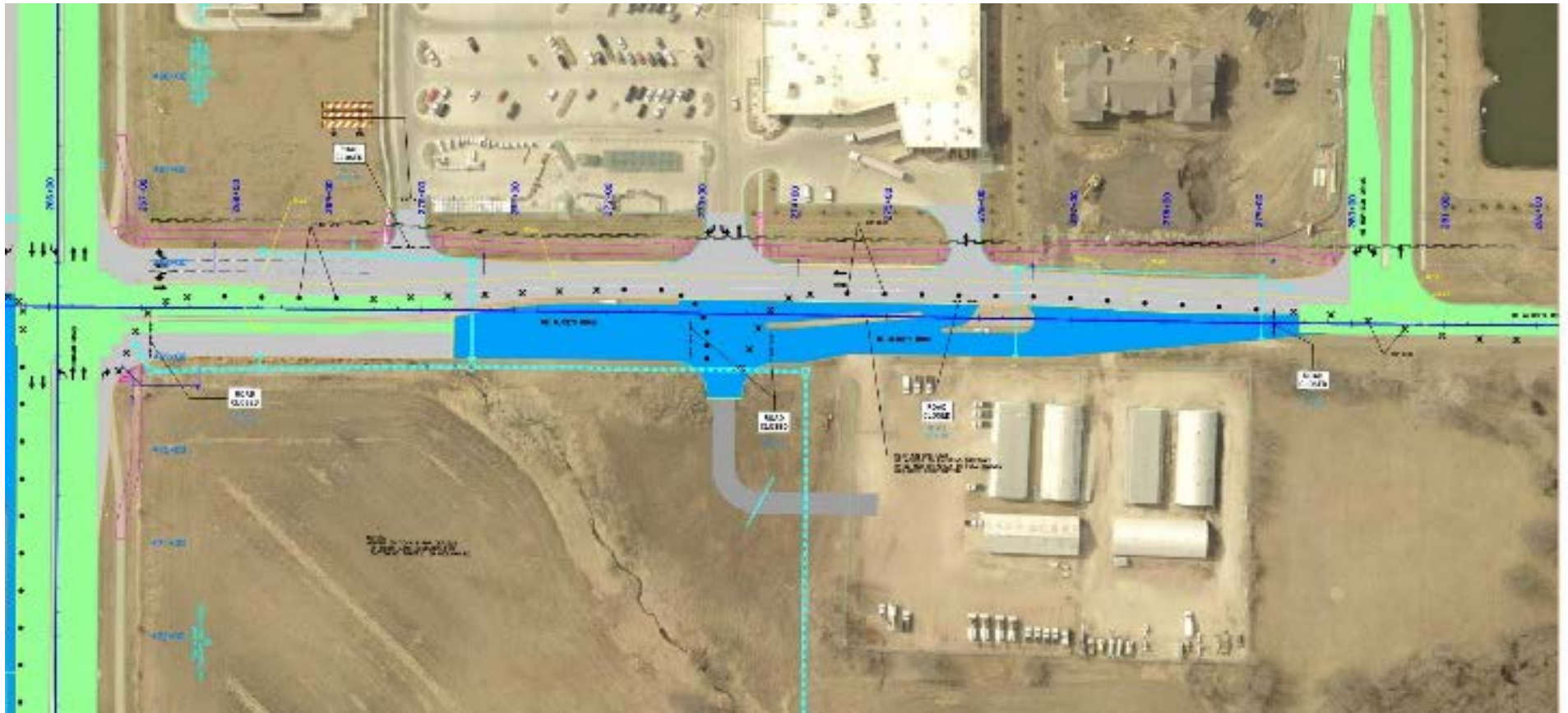


Construction Staging - Stage 4





Construction Staging - Stage 4



≡≡≡ What to Expect During Construction

- ❖ One Lane of Traffic in Each Direction
- ❖ Multiple Traffic Pattern shifts
- ❖ Access will be maintained to businesses
- ❖ SE Laurel Street Closure
- ❖ Night Closures on Alice's Rd for utility crossings





Questions

- ❖ Comment Forms Available
- ❖ Construction Representatives Available
 - ▶ Joshua DeBower, P.E.
 - ▶ Rudy Koester, P.E.





Waukee

THE KEY TO GOOD LIVING



Foth

www.foth.com