

CONSTITUENT PROJECTS

West Des Moines

◆ **105th Street Extension:** This project entails extending 105th Street from Alice's Road/105th Street Bridge at Interstate 80 south across the Raccoon River into Madison County. This street segment is part of the few north-south continuous roadways in the metropolitan area stretching from G-14 in Madison County north through West Des Moines, Waukee, Clive, Urbandale, just west of Grimes and up to Granger, Iowa.

Major roadways heading west in West Des Moines which will intersect 105th Street will include E.P. True Parkway, Mills Civic Parkway, Stagecoach Road, and Grand Avenue in Dallas County. Eventually, 105th Street will continue south across the Raccoon River to the future Southwest Connector which will have an interchange on I-35.

The roadway will be constructed with 3 lanes initially and 6 lanes when the traffic studies warrant it. Land uses contemplated for the area include residential estates surrounded by the rolling contours and expansive wooded lots. The first phase of the project, jointly with Waukee, will involve the construction of the approaches to the I-80 bridge. Future phases will start at the I-80 approach and head south.

◆ **Grand Avenue Extension:** This project entails extending the current Grand Avenue roadway from Jordan Creek Parkway to access 105th Street, therefore opening the Technology Gateway for further development. The roadway is expected to be constructed with 4 to 6 continuous lanes for traffic to support the predominantly commercial traffic demand in the area. The land uses along Grand Avenue are planned to focus on technology-oriented companies. This corridor extends across a relatively flat area of town with wonderful vistas to the north and to the south towards the Raccoon River which should attract users wanting to provide a very pleasing aesthetic for their employees. Grand Avenue will connect I-35 with Jordan Creek Parkway, 88th Street, and 105th Street, which all provide access to residential and retail areas to support employers locating in the corridor.

Waukee

◆ **Alice's Road Extension (Ashworth Road to University Avenue):** This project entails the construction of a six-lane arterial boulevard with additional left and right turn lanes, storm sewer improvements and water main construction. This road extension will connect with the Alice's Road/105th Street Bridge and proposed future interchange and open approximately 1,300 acres of land for development. Land use plans for the corridor include office, commercial, and residential development. The City of Waukee projects several thousand jobs will be created with the development that will occur directly adjacent to this project and promote further job creation in spurred development over the next several years.

◆ **Fox Creek/Alice's Road Sanitary Trunk Sewer:** The Fox Creek/Alice's Road Sanitary Trunk Sewer project will create sanitary sewer capacity for approximately 960 acres of the 1,300 acres within the corridor. The remaining 340 acres will be serviced by the existing sanitary sewer infrastructure within the City of Waukee. The Fox Creek/Alice's Road Sanitary Trunk Sewer will be a part of the much larger Wastewater Reclamation Authority (WRA) of Waukee, which services the majority of the Des Moines Metropolitan Area. The City of Waukee invested in the WRA in 2006 as a cost-effective avenue to expand capacity for development.

◆ **Alice's Road Widening (University Ave to Hickman Rd):** The City of Waukee has designated the Alice's Road Corridor as a priority project for facilitating the growth of additional employment, commerce, and economic development opportunities in the community. Plans have been approved to widen the existing portion of Alice's Road between University Avenue and Hickman Road from 2 to 4 lanes, complete with a designated turning lane. Several businesses have invested within this segment of the corridor in preparation for the extension of the corridor and access to the planned interchange. The widening of this segment will provide continuity with the future Alice's Road Extension from Ashworth Road, north to University Avenue.



CONTACT INFORMATION:

Jeff Kooistra, Waukee City Administrator
PHONE | 515.987.4522
CELL | 515.707.5012

Jeff Pomeranz, West Des Moines City Manager
PHONE | 515.222.3612
CELL | 515.202.3612



SUPPORTERS OF ALICE'S ROAD / 105TH STREET CORRIDOR

- ◆ Alice's Road / 105th Street Corridor Property Owners
- ◆ Dallas County Supervisors
- ◆ Greater Dallas County Development Alliance
- ◆ Waukee Area Economic Development Corporation
- ◆ Iowa Department of Transportation
- ◆ Federal Highway Administration

Alice's Road / 105th Street Corridor

Waukee Elected Officials

- William F. Peard**
Mayor
- Darlene Stanton**
Mayor Pro Tem
- Mike Watts**
Councilmember
- Casey Harvey**
Councilmember
- Shane Blanchard**
Councilmember
- Dan Dutcher**
Councilmember

West Des Moines Elected Officials

- Steven K. Gaer**
Mayor
- Ted Ohmart**
Mayor Pro Tem, At-Large
- Kevin Trevillyan**
Councilmember, First Ward
- Charles Schnieder**
Councilmember, Second Ward
- Russ Trimble**
Councilmember, Third Ward
- James Sandager**
Councilmember, At-Large

Alice's Road / 105th Street Corridor

Alice's Road / 105th Street Corridor



Investing today to build a stronger tomorrow...



PROJECT OVERVIEW

The cities of Waukee and West Des Moines have designated the Alice's Road/105th Street Corridor project as a top transportation infrastructure priority. As both communities have faced drastic growth in the last several years, the Alice's Road/105th Street Corridor has become a favored area for development with its close proximity and access to several major transportation corridors. Continued support of current and future development will require providing adequate infrastructure to ensure future stability and economic vitality for both communities. Dallas County, and the State of Iowa. Leadership in both Waukee and West Des Moines are hopeful that our investments in collaborative and planned growth will prove to be beneficial during the process of allocating funding and support.

The cities of Waukee and West Des Moines continue to be successful in fostering and facilitating growth within their communities through collaborative regional planning. Leadership from each community continues to support the best use of land and public dollars. For this reason, the cities of Waukee and West Des Moines experience broad community support. Supporters of the Alice's Road/105th Street Corridor development include: Alice's Road Corridor Property Owners, Dallas County Supervisors, Greater Dallas County Development Alliance, and the Waukee Area Economic Development Corporation. In addition, the proposed Alice's Road/105th Street Interchange on Interstate 80 has been identified in the long range transportation plans of both the Des Moines Metropolitan Area Planning Organization and the Iowa Department of Transportation.

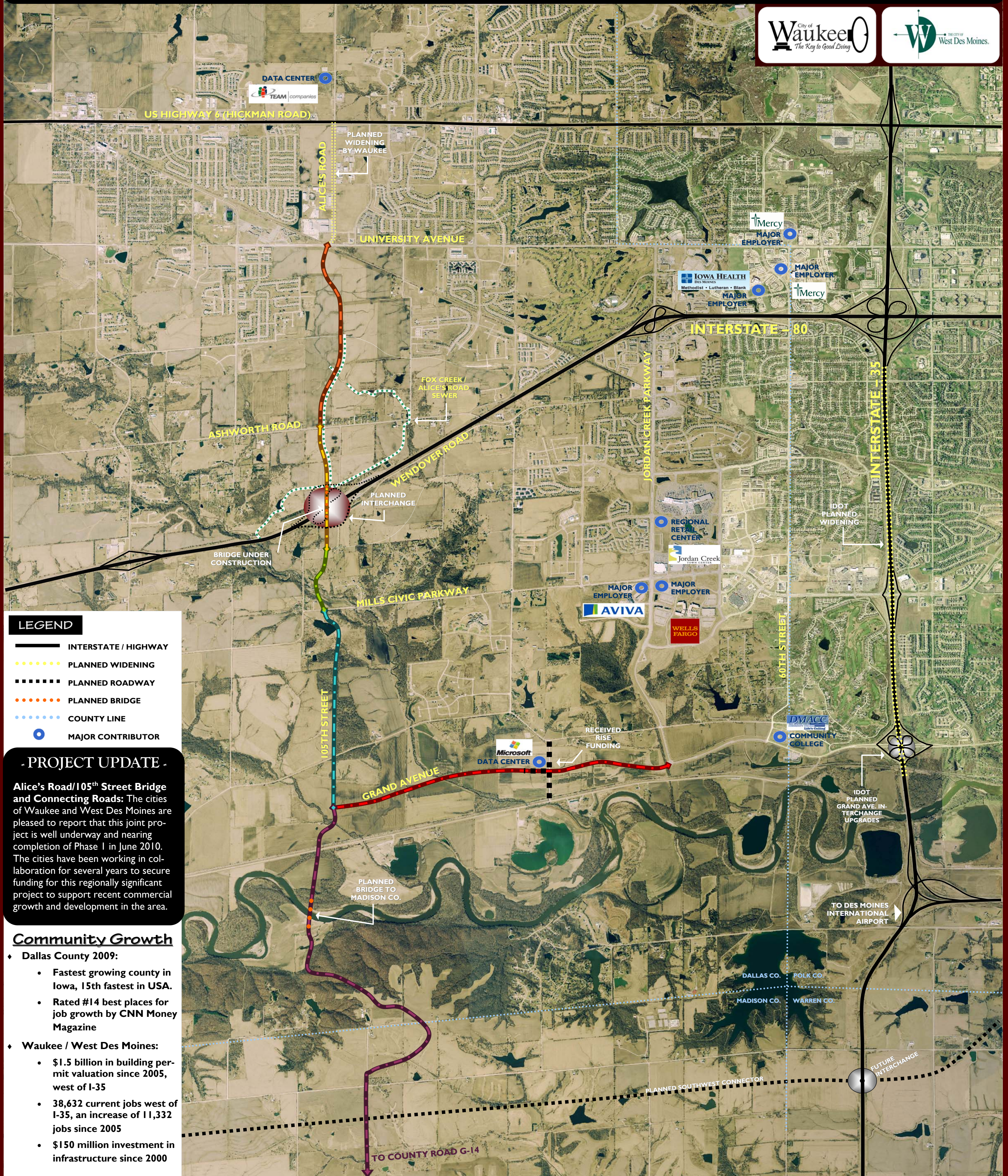
JOINT CITY PROJECT

◆ **Alice's Road/105th Street Interchange and Connecting Roads:** This project, identified by the Des Moines Area Metropolitan Planning Organization as a 2011 priority project, entails the construction of an Interstate 80 interchange that will allow access to the Alice's Road/105th Street Corridor as well as the paving of the six-lane road extending through Waukee and across the new Alice's Road / 105th Street Bridge to adjoin with 105th Street in West Des Moines. The completion of this project will open the longest north-south transportation corridor in the western Des Moines Metropolitan Area. This project has been identified in the long range transportation plans of both the Des Moines Area Metropolitan Planning Organization and the Iowa Department of Transportation.

- ◆ **2011 PHASE:** Paving 3 lanes of Approaches.
Project cost: 2,000,000
- ◆ **2012 PHASE:** Paving of remaining 3 lanes of Approaches.
Project cost: 2,000,000
- ◆ **2013 PHASE:** Alice's Road/105th Street Interchange.
Project cost: 15,000,000

Alice's Road / 105th Street Corridor

& RELATED PROJECTS



LEGEND

- INTERSTATE / HIGHWAY
- PLANNED WIDENING
- PLANNED ROADWAY
- PLANNED BRIDGE
- COUNTY LINE
- MAJOR CONTRIBUTOR

PROJECT UPDATE

Alice's Road/105th Street Bridge and Connecting Roads: The cities of Waukee and West Des Moines are pleased to report that this joint project is well underway and nearing completion of Phase 1 in June 2010. The cities have been working in collaboration for several years to secure funding for this regionally significant project to support recent commercial growth and development in the area.

Community Growth

- ◆ **Dallas County 2009:**
 - Fastest growing county in Iowa, 15th fastest in USA.
 - Rated #14 best places for job growth by CNN Money Magazine
- ◆ **Waukee / West Des Moines:**
 - \$1.5 billion in building permit valuation since 2005, west of I-35
 - 38,632 current jobs west of I-35, an increase of 11,332 jobs since 2005
 - \$150 million investment in infrastructure since 2000