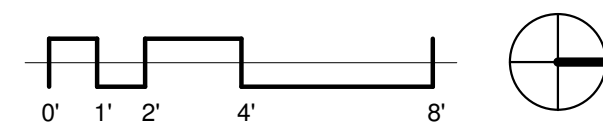




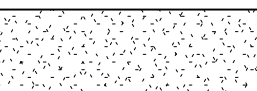
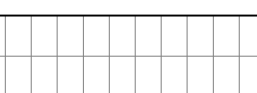
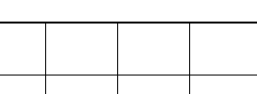
1 FLOOR PLAN PROPOSED

A.100 SCALE: 1/4" = 1'-0"

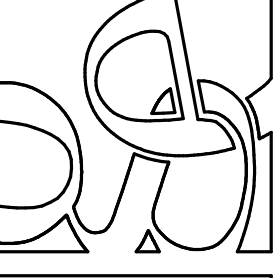


DOOR NO.	TYPE	DESCRIPTION	DOOR SCHEDULE												
			DOOR				GLASS TYPE	FRAME HEIGHT	FRAME			FIRE RATING LABEL (MIN.)	HARDWARE GROUP (SET NO.)	COMMENTS	
			WIDTH	HEIGHT	THICKNESS	MATERIAL			MATERIAL	HEAD	JAMB				SILL
01	70		6'-0"	7'-10"	0'-1 3/4"										
02	8		3'-0"	7'-0"	0'-1 3/4"										
03	8		3'-0"	7'-0"	0'-1 3/4"										
04	96		3'-0"	7'-10"	0'-1 3/4"										
05	8		3'-0"	7'-0"	0'-1 3/4"										
06	70		6'-0"	7'-10"	0'-1 3/4"										
11	96		3'-0"	7'-10"	0'-1 3/4"										

FLOOR FINISH LEGEND

-  CARPET TILE
-  TILE 18" X 18"
-  RESILIENT CARPET
-  PORCELAIN TILE FLOOR 6 1/2" X 20"
-  LINOLEUM 18" X 18"

98 WATTIER architecture, inc.  
 305 east court, apt 100  
 Des Moines, IA 50319  
 P: 515.243.0074  
 F: 515.243.0075  
 info@newwattier.com  
 www.newwattier.com



This drawing is an instrument of service prepared by WATTIER architecture, inc. and shall remain the property of WATTIER architecture, inc. It is to be used only for the project and site specifically identified on this drawing. No other use, reproduction, or distribution is permitted without the written consent of WATTIER architecture, inc.

**Waukee Community Center**  
 355 7th St.  
 Waukee, IA 50263

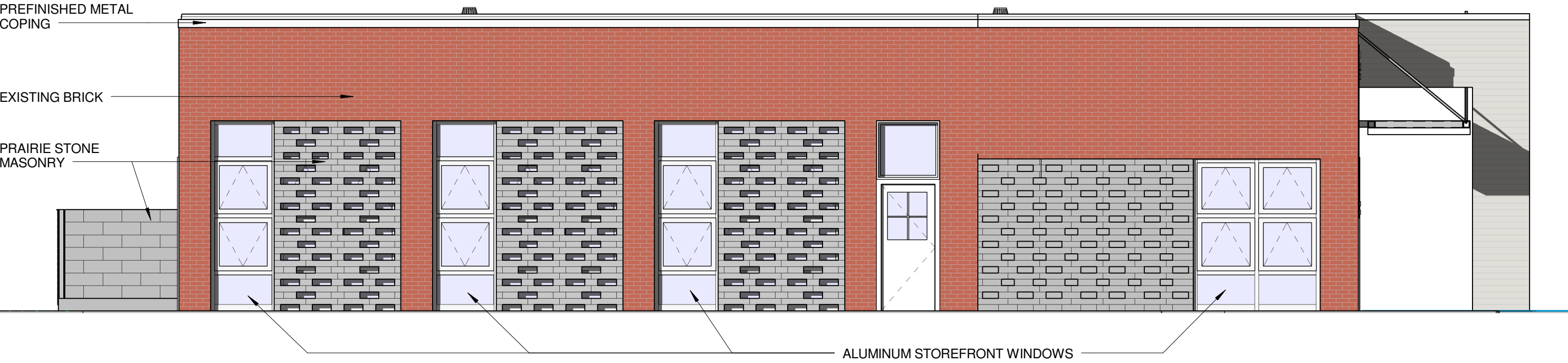
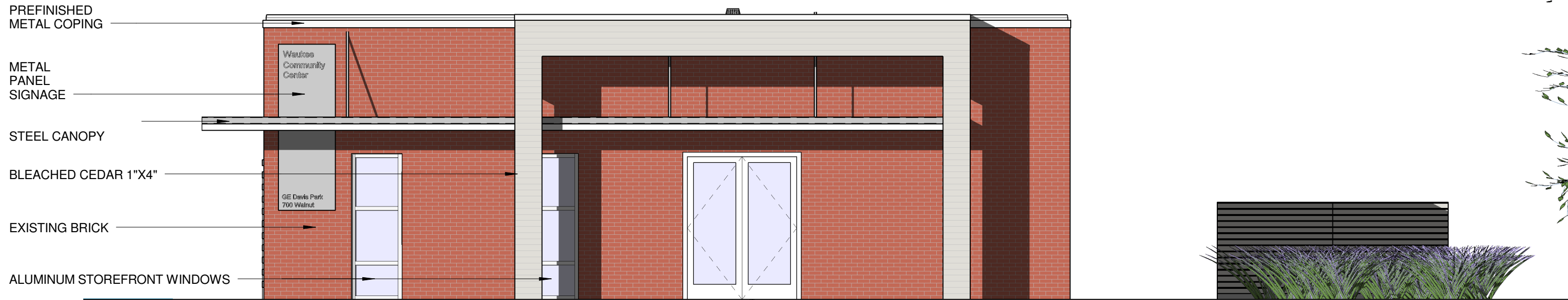
SHEET AUTHOR: Author  
 CHECKED BY: Checker  
 PROJECT MANAGER: Approver  
 CS# NUMBER: 2011-21

ISSUE DATE: 12.08.2011  
 ISSUE TITLE: DD

NO.	REVISION DESCRIPTION	DATE

SHEET NAME: FLOOR PLAN  
 SHEET NUMBER: A.100

PRELIMINARY - NOT FOR CONSTRUCTION



12/8/2011 1:30:16 PM C:\Users\Kylie\Desktop\kyle\_REVIT\Waukee Community Center - Central\_Kyle(Recovery).rvt

ELEVATIONS  
**Waukee Community Center**

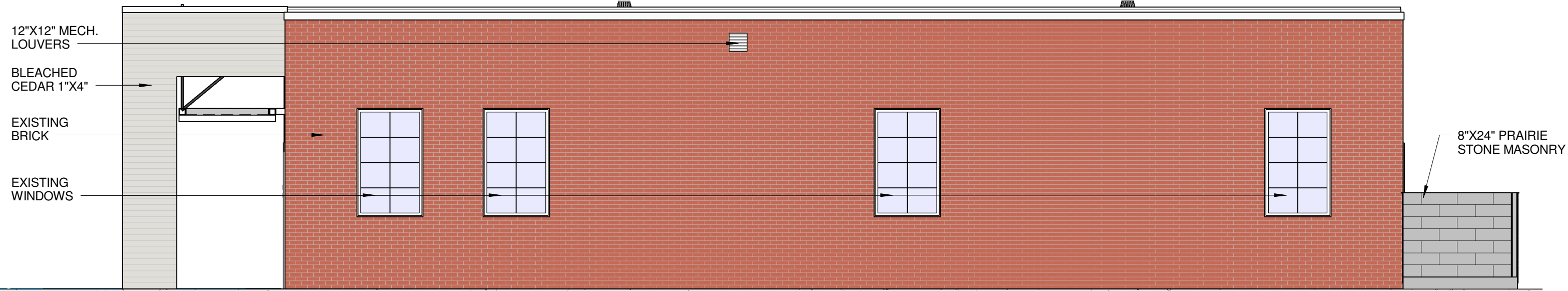
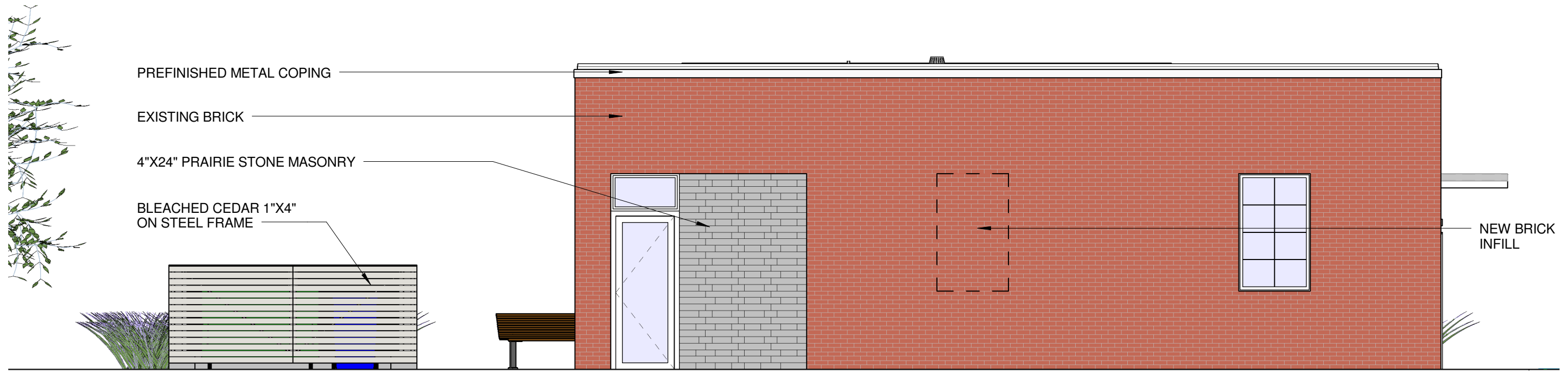
355 7th St.  
 Waukee, IA 50263

3/16" = 1'-0"

12.08.2011



ge WATTIER architecture inc.  
 www.gewattier.com



12/8/2011 1:31:33 PM C:\Users\Kyle\Desktop\kyle\_REVIT\Waukee Community Center - Central\_Kyle(Recovery).rvt

ELEVATIONS  
**Waukee Community Center**

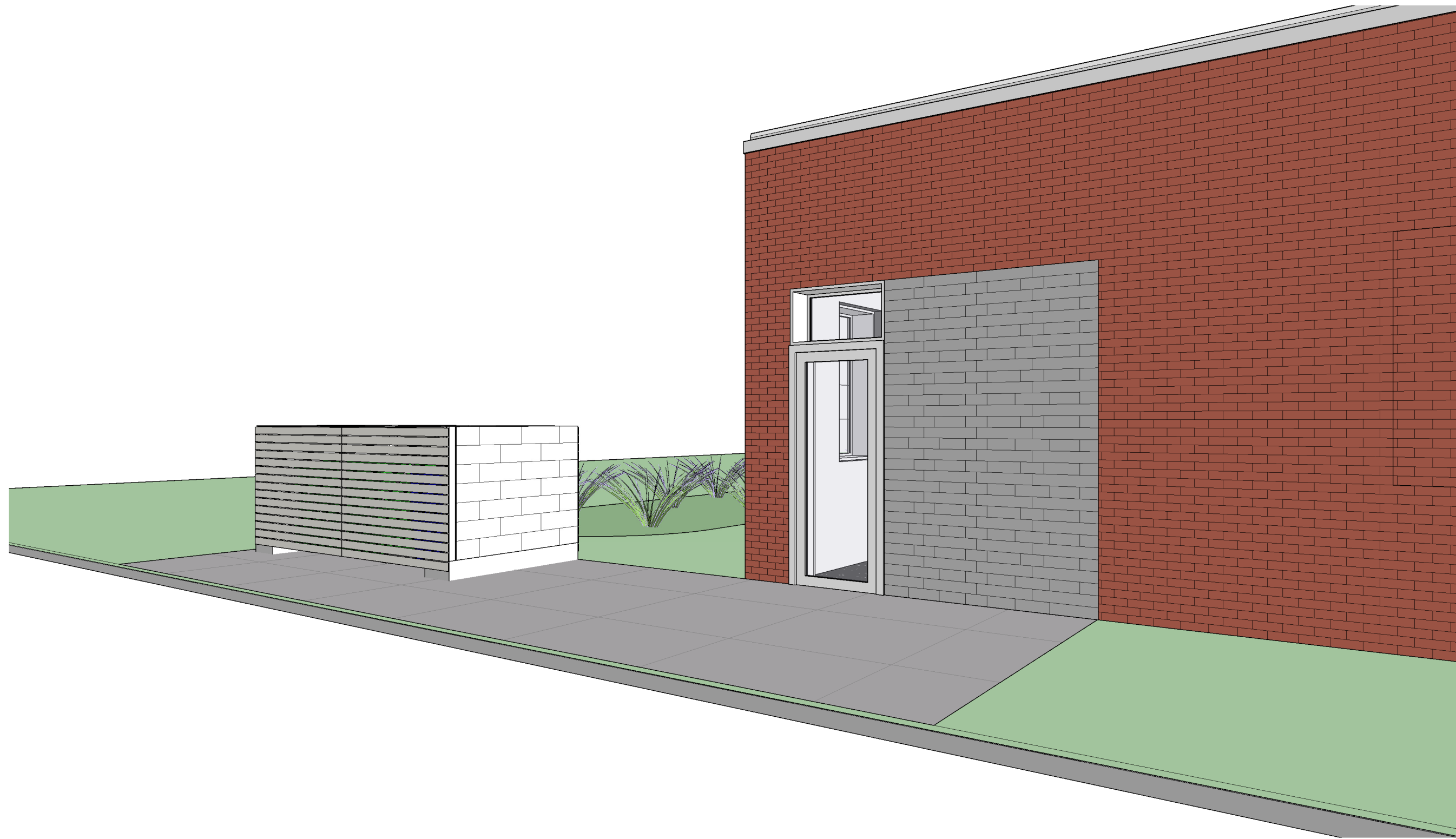
355 7th St.  
 Waukee, IA 50263

3/16" = 1'-0"

12.08.2011



ge WATTIER architecture inc.  
 www.gewattier.com



TRASH ENCLOSURE  
**Waukee Community Center**

355 7th St.  
Waukee, IA 50263

12.08.2011



ge **WATTIER** architecture inc.  
www.gewattier.com