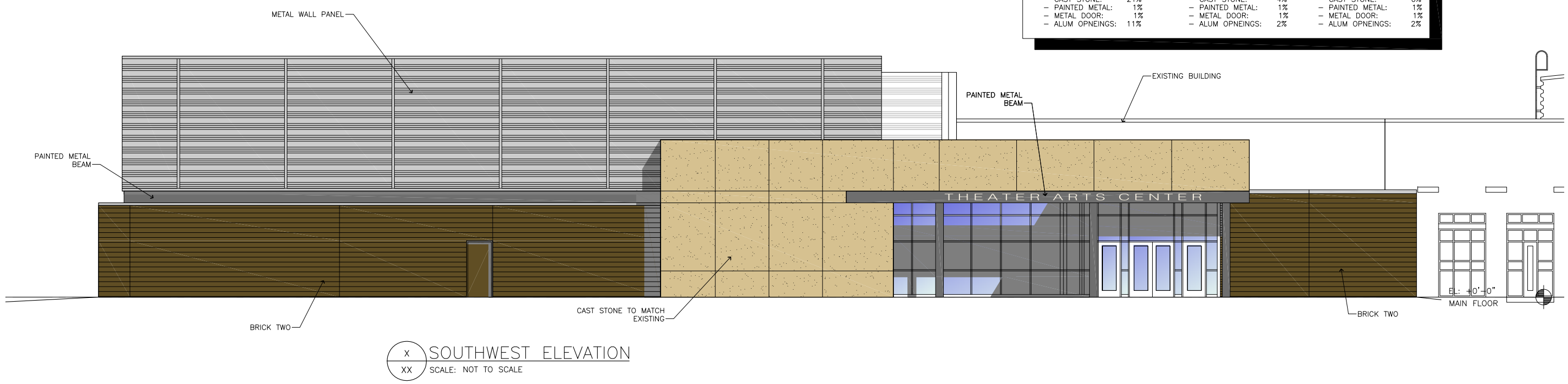


MATERIAL PERCENTAGES		
SOUTH ELEVATION:		
- BRICK:	27%	
- METAL PANEL:	39%	
- CAST STONE:	21%	
- PAINTED METAL:	1%	
- METAL DOOR:	1%	
- ALUM OPNEINGS:	11%	
WEST ELEVATION:		
- BRICK:	38%	
- METAL PANEL:	55%	
- CAST STONE:	4%	
- PAINTED METAL:	1%	
- METAL DOOR:	1%	
- ALUM OPNEINGS:	2%	
NORTH ELEVATION:		
- BRICK:	37%	
- METAL PANEL:	57%	
- CAST STONE:	0%	
- PAINTED METAL:	1%	
- METAL DOOR:	1%	
- ALUM OPNEINGS:	2%	



MATERIAL PERCENTAGES		
SOUTH ELEVATION:		
- BRICK:	27%	
- METAL PANEL:	39%	
- CAST STONE:	21%	
- PAINTED METAL:	1%	
- METAL DOOR:	1%	
- ALUM OPNEINGS:	11%	
WEST ELEVATION:		
- BRICK:	38%	
- METAL PANEL:	55%	
- CAST STONE:	4%	
- PAINTED METAL:	1%	
- METAL DOOR:	1%	
- ALUM OPNEINGS:	2%	
NORTH ELEVATION:		
- BRICK:	37%	
- METAL PANEL:	57%	
- CAST STONE:	0%	
- PAINTED METAL:	1%	
- METAL DOOR:	1%	
- ALUM OPNEINGS:	2%	

