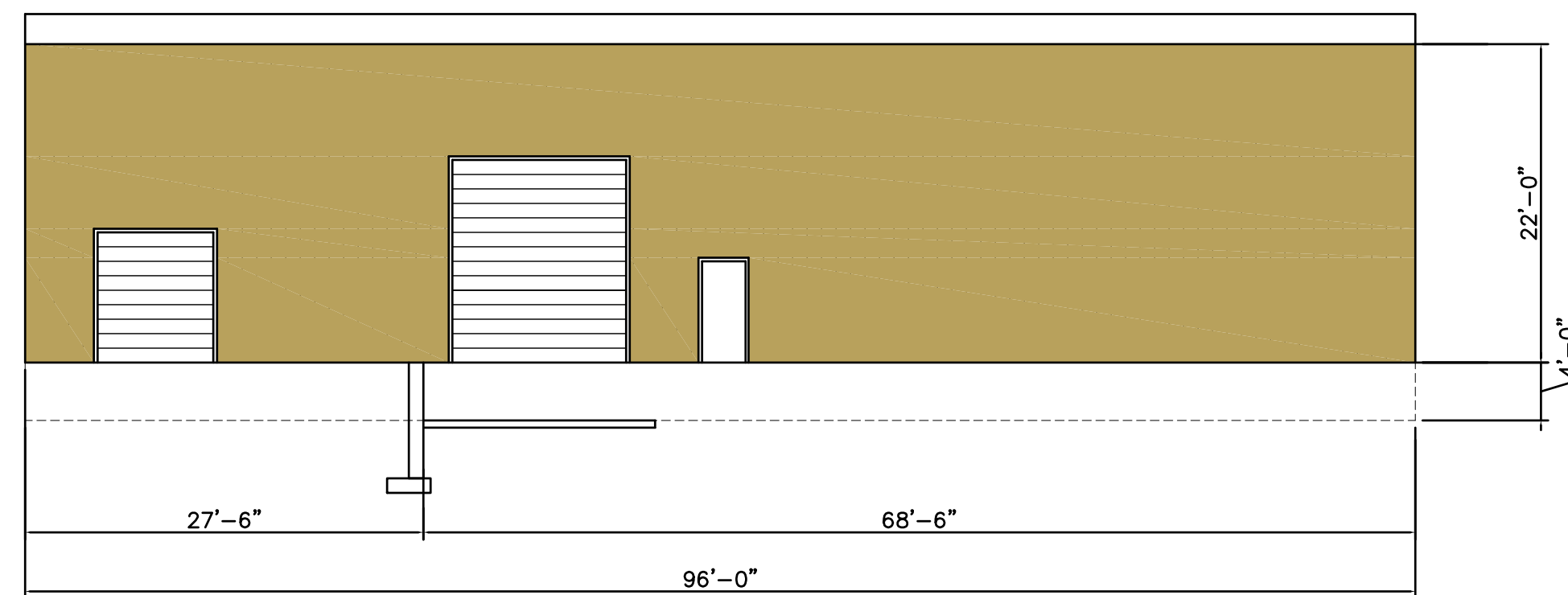


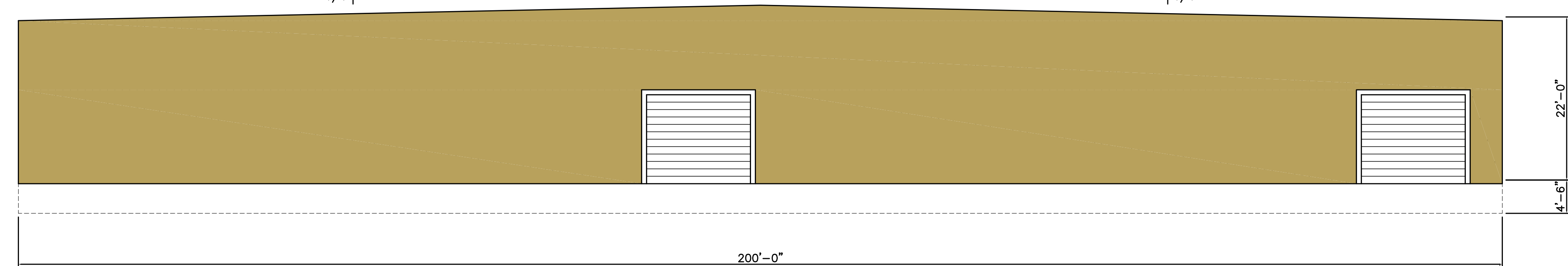
WEST ELEVATION

1/4 | 12



EAST ELEVATION

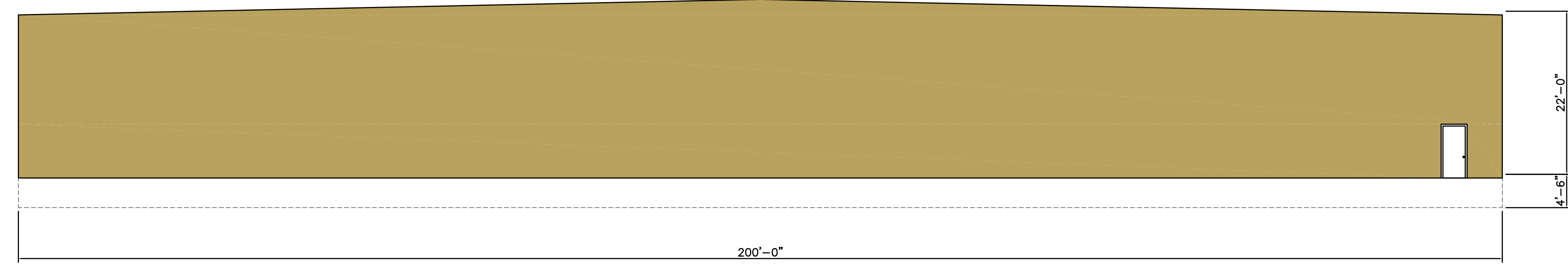
12 | 1/4



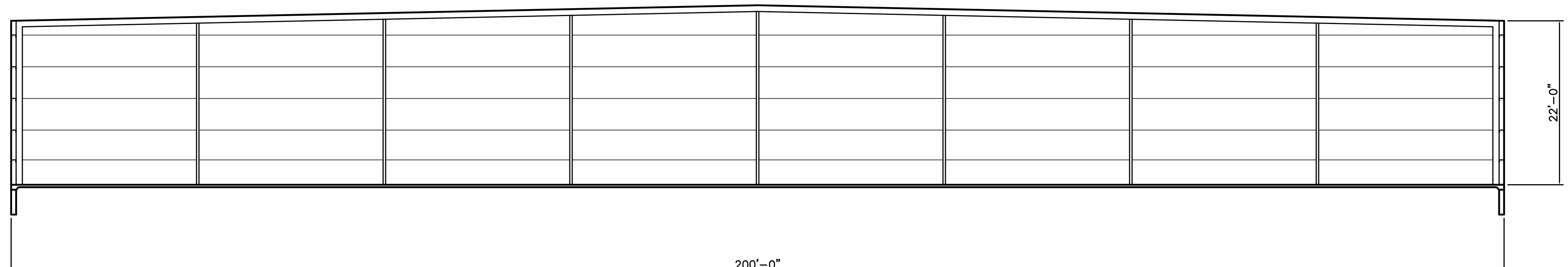
EXISTING NORTH WALL

1/4 | 12

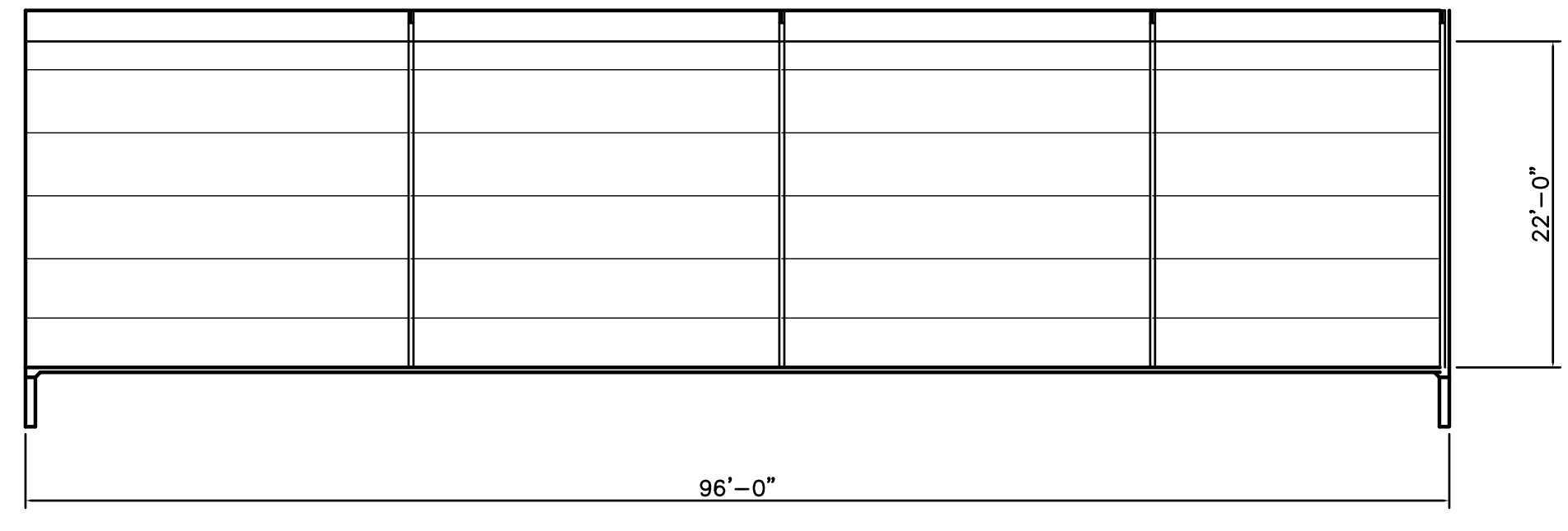
12 | 1/4



NORTH ELEVATION



LONGITUDINAL SECTION



TRANSVERSE SECTION

ADVANCED ENGINEERING INC.
815 OFFICE PARK ROAD, STE 7
WEST DES MOINES, IOWA
515.226.0867

Drawn by: EFH
Date: 4/20/2011

Checked by: EFH
Date: 4/20/2011

Revisions:

SYRVET BUILDING
955 SE OLSON
WAUKEE, IOWA

DRAWING:
FOUNDATION PLAN

SCALE:
3/32" = 1'-0"

JOB NO.

PAGE NO.
S2