

PLANT LIST: (OPEN SPACE)

SYL.	QTY.	COMMON NAME/BOTANICAL NAME	SIZE	ROOT
SL	9	SKYLINE LOCUST <i>Gleditsia triacanthos inermis 'Skyline'</i>	2'-2" Cal.	B&B
RM	19	RED SUNSET MAPLE <i>Acer rubrum 'Frankford'</i>	2'-2" Cal.	B&B
CM	9	CELEBRATION FREEMAN MAPLE <i>Acer x freemanii 'Celebration'</i>	2'-2" Cal.	B&B
WB	14	SWAMP WHITE OAK <i>Quercus bicolor</i>	2'-2" Cal.	B&B
RB	9	RIVER BIRCH (MULTI-STEM) <i>Betula nigra</i>	2'-2" Cal.	B&B
JL	14	IVORY SILK JAPANESE TREE LILAC <i>Syringa reticulata 'Ivory Silk'</i>	1" Cal.	B&B
CF	17	CONCOLOR FIR <i>Abies concolor</i>	8' HL.	B&B
NS	6	NORWAY SPRUCE <i>Picea abies</i>	8' HL.	B&B
BC	88	BLACK CHOCHEBERRY <i>Azalea redbonecapa</i>	5 Gal.	Cont.
EC	32	EUROPEAN CRANBERRY BUSH <i>Viburnum opulus 'Compadre'</i>	5 Gal.	Cont.
AC	25	ALPINE CURRANT <i>Ribes alpinum</i>	5 Gal.	Cont.
GS	39	GROUNDW FRAGRANT SUMAC <i>Rhus aromatica 'Scented Leaves'</i>	5 Gal.	Cont.
DF	20	DWF. FOUNTAIN GRASS <i>Pennisetum alopecuroides 'Yama'</i>	1 Gal.	Cont.
PD	16	PAVING DRIP SEED <i>Sporobolus heterostachys</i>	1 Gal.	Cont.

LANDSCAPE CALCS. (OPENSPACE)

TOTAL SITE AREA = 162,289 s.f.
REQ. OPENSACE = 152,458 s.f. (20%)

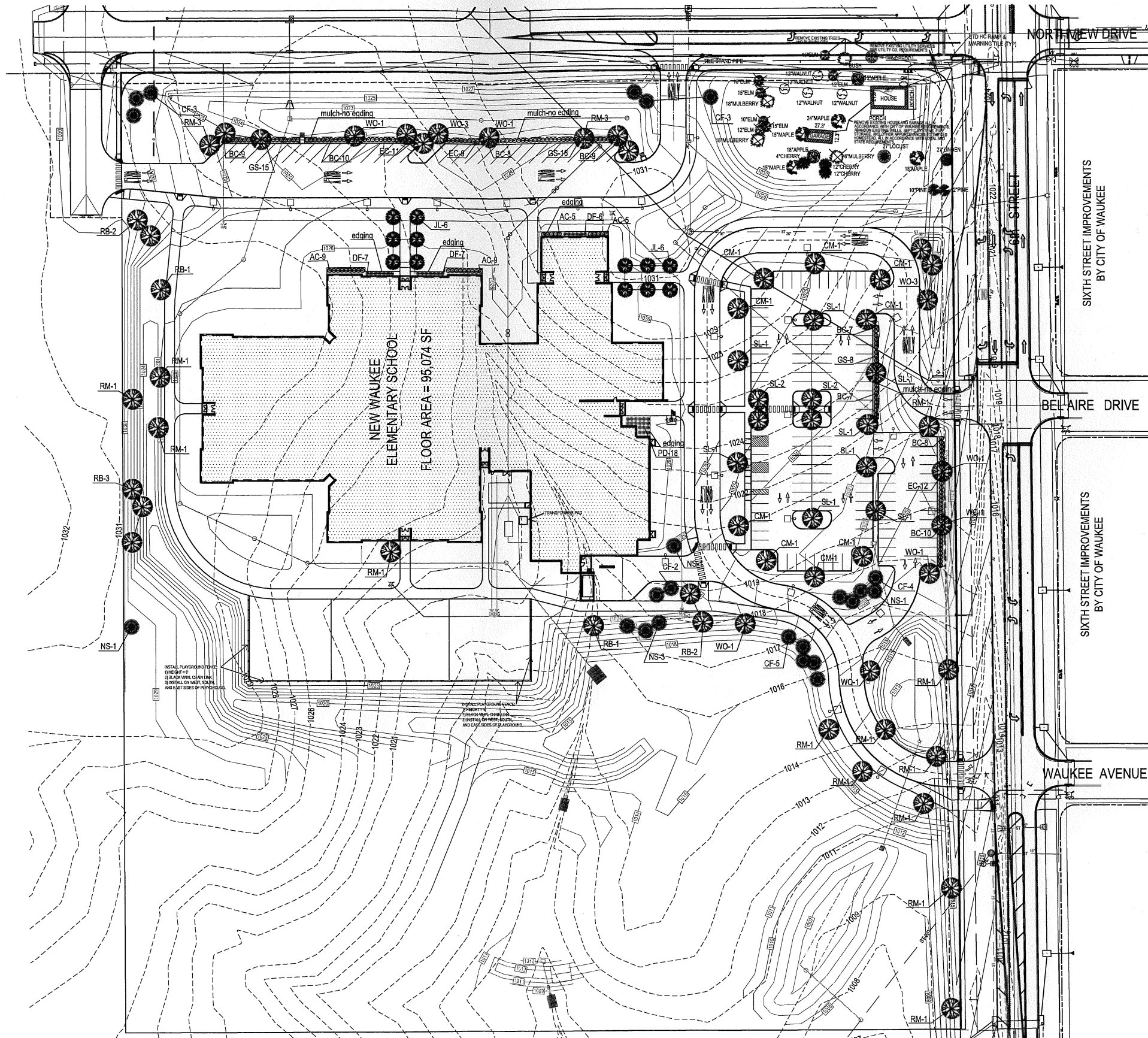
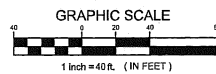
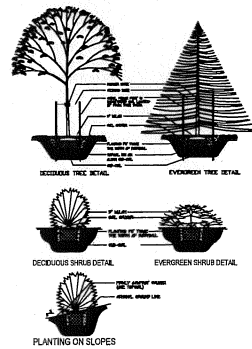
1 TREES PER 1500 s.f. OF REQ. OPENSACE = 102 TREES
1 SHRUB PER 1000 s.f. OF REQ. OPENSACE = 154 SHRUBS

15x EXISTING TREES
97 PROPOSED TREES
167 PROPOSED SHRUBS

GENERAL NOTES:

1. ALL SEEDING, SOODING & LANDSCAPE PLANTINGS SHALL BE INSTALLED IN ACCORDANCE WITH THE URBAN STANDARD SPECIFICATIONS, UNLESS SPECIFIED OTHERWISE.
2. SEED ALL UNTRIED AREAS WITHIN THE CONTRACT LIMITS WHEN ALLOWED, OTHERWISE USE SOO.
3. STAKE SOO ON ALL SLOPES 3:1 OR GREATER.
4. PLANT QUANTITIES ARE FOR CONTRACTORS CONVENIENCE. THE DRAWING SHALL PREVAIL IF A CONFLICT OCCURS.
5. ALL PLANT MATERIAL SHALL CONFORM TO THE "AMERICAN STANDARD FOR NURSERY STOCK" (ANSI Z60.1 - 1995).
6. CONTRACTOR SHALL GUARANTEE ALL PLANT MATERIAL FOR A PERIOD OF ONE YEAR FROM THE DATE OF INSTALLATION.
7. IT IS THE CONTRACTORS RESPONSIBILITY TO REMOVE IDENTIFICATION TAGS AND CORDS ON ALL PLANT MATERIAL PRIOR TO THE COMPLETION OF THE CONTRACT.
8. CONTRACTOR SHALL PLACE SHREDDERED CEDAR BARK MULCH AROUND ALL TREES, SHRUBS AND GROUND COVER BEDS TO A DEPTH OF 3 INCHES, UNLESS NOTED.
9. STAKE AND WRAP ALL DECIDUOUS TREES IMMEDIATELY AFTER PLANTING. STAKE ALL TREES ACCORDING TO THE STAKING DETAILS. CONTRACTOR SHALL ADJUST AND MAINTAIN GUYING TENSION THROUGHOUT THE PLANT ESTABLISHMENT PERIOD.
10. THE LANDSCAPING CONTRACTOR SHALL HAVE ALL UTILITIES LOCATED BEFORE STARTING ANY SITE WORK OR PLANTING. THE CONTRACTOR SHALL BE RESPONSIBLE FOR THE PROTECTION OF ALL EXISTING UTILITIES.
11. NO LANDSCAPE MATERIAL SHALL BE SUBSTITUTED WITHOUT THE AUTHORIZATION OF THE LANDSCAPE ARCHITECT.
12. ALL EDGING SHALL BE 4" STEEL EDGING PAINTED GREEN.

TREE DETAILS:



I HEREBY CERTIFY THAT THESE PLANS AND SPECIFICATIONS WERE PREPARED BY ME OR UNDER MY DIRECT PERSONAL SUPERVISION AND THAT I AM A DULY LICENSED PROFESSIONAL LANDSCAPE ARCHITECT UNDER THE LAWS OF THE STATE OF IOWA. IOWA REGISTRATION NO. 338.
BY: PHILIP R. JONES LICENSE RENEWAL DATE: JUNE 30, 2010

SIGNED: _____ DATE: _____

4446 CORPORATE DRIVE
WEST DES MOINES, IOWA
50266-5937
PHONE 515-223-5100
FAX 515-223-7226
WWW.FRK-AE.COM

REVERT
AMSEY
KOBES
ARCHITECTS
ENGINEERS

CONTRACTOR: ADDS DESIGN-BUILD ARCHITECTS/ENGINEERS P.C. THIS DOCUMENT AND THE PERMIT INFORMATION OF THAT COMPANY ARE ARCHITECTS/ENGINEERS P.C. UNAUTHORIZED COPYING OR REUSE OF THIS DOCUMENT IS PROHIBITED BY THE COPYRIGHT LAW.

SITE PLAN
NEW WAUKEE ELEMENTARY SCHOOL
WAUKEE COMMUNITY SCHOOL DISTRICT
WAUKEE, IOWA

PROJECT NO.:
DATE: MARCH 3, 2009
REVISIONS:
APRIL 2, 2009 PER CITY COMMENTS
APRIL 5, 2009 PER CITY COMMENTS

DRAWING TITLE:
LANDSCAPE PLAN

DRAWING NO.:
C5.1