

WAUKEE FAMILY TOWNHOMES PLAT 1

FINAL PLAT

COORDINATE TABLE:

POINT#	NORTHING	EASTING
1	770628.89	723773.99
2	770547.91	723773.61
3	769701.74	723751.88
4	769701.13	723775.48
5	769575.32	723738.57
6	769515.69	723738.04
7	769518.17	723183.04
8	769563.31	723183.34
9	769740.22	723152.58
10	769748.14	723149.68
11	769919.42	723119.53
12	770719.86	723121.39
13	770744.80	723146.55
14	770744.67	723168.83
15	770700.33	723452.11
16	770658.07	723586.66
17	770628.96	723767.10
20	770531.64	723750.19
21	770494.57	723749.23
22	770457.50	723748.28
23	770459.89	723655.31
24	770496.96	723656.26
25	770534.03	723657.22
26	770447.12	723724.01
27	770410.05	723723.06
28	770372.98	723722.10
29	770374.70	723655.13
30	770411.77	723656.08
31	770411.82	723654.08
32	770448.89	723655.03
33	770361.37	723745.81
34	770324.30	723744.86
35	770287.22	723743.91
36	770289.61	723650.94
37	770326.68	723651.89
38	770363.75	723652.84
39	770276.84	723719.63
40	770239.77	723718.68
41	770202.70	723717.73
42	770204.42	723650.75
43	770241.49	723651.70
44	770241.54	723649.70
45	770278.62	723650.66
46	770191.09	723741.44
47	770154.02	723740.49
48	770116.95	723739.54
49	770119.33	723646.57
50	770156.41	723647.52
51	770193.48	723648.47
52	770106.57	723715.26
53	770069.50	723714.31
54	770032.42	723713.36
55	770034.14	723646.38
56	770071.22	723647.33
57	770071.27	723645.33
58	770108.34	723646.28
59	770020.81	723737.07
60	769983.74	723736.11
61	769946.67	723735.16
62	769949.06	723642.19
63	769986.13	723643.14
64	770023.20	723644.10
65	769936.29	723710.89
66	769899.22	723709.94
67	769862.15	723708.98
68	769863.87	723642.01
69	769900.94	723642.96
70	769900.96	723640.96
71	769938.06	723641.91
72	769850.53	723732.69
73	769813.46	723731.74
74	769776.39	723730.79
75	769778.78	723637.82
76	769815.85	723638.77
77	769852.92	723639.72
78	769765.82	723718.43
79	769728.75	723717.48
80	769691.68	723716.53
81	769693.40	723649.55
82	769730.47	723650.50
83	769730.52	723648.50
84	769767.59	723649.46
85	769628.01	723671.49
86	769614.02	723637.15
87	769600.02	723602.81
88	769662.07	723577.52
89	769676.07	723611.87
90	769677.92	723611.11
91	769691.91	723645.45
92	769686.95	723671.61
93	769587.03	723534.53
94	769587.12	723497.45
95	769680.12	723497.66
96	769680.03	723534.75
97	769679.95	723571.83
98	769592.79	723484.46
99	769592.87	723447.38
100	769592.96	723410.29
101	769685.96	723410.51
102	769685.87	723447.59
103	769685.79	723484.68
104	769581.81	723397.27
105	769581.90	723360.18
106	769581.98	723323.10
107	769674.98	723323.32
108	769674.90	723360.40
109	769674.81	723397.48
110	769596.81	723247.24

COORDINATE TABLE:

POINT#	NORTHING	EASTING
111	769621.54	723219.61
112	769646.27	723191.97
113	769715.57	723253.99
114	769690.85	723281.62
115	769666.12	723309.26
116	769715.64	723201.67
117	769750.80	723189.89
118	769785.96	723178.11
119	769807.25	723241.64
120	769772.09	723253.42
121	769772.72	723255.31
122	769737.56	723267.10
123	769810.17	723167.37
124	769847.25	723167.45
125	769884.33	723167.54
126	769884.18	723234.54
127	769847.10	723234.45
128	769847.09	723236.45
129	769810.01	723236.37
130	769895.34	723166.47
131	769932.42	723166.56
132	769969.50	723166.65
133	769969.35	723233.65
134	769932.26	723233.56
135	769932.26	723235.66
136	769895.18	723235.47
137	769980.56	723142.67
138	770017.64	723142.76
139	770054.73	723142.84
140	770054.51	723235.84
141	770017.43	723235.76
142	769980.34	723235.67
143	770065.67	723166.87
144	770102.75	723166.96
145	770139.84	723167.04
146	770139.68	723234.04
147	770102.60	723233.96
148	770102.59	723235.96
149	770065.51	723235.87
150	770150.89	723143.07
151	770187.98	723143.15
152	770225.06	723143.24
153	770224.84	723236.24
154	770187.76	723236.15
155	770150.68	723236.07
156	770236.00	723167.27
157	770273.09	723167.35
158	770310.17	723167.44
159	770310.01	723234.44
160	770272.93	723234.35
161	770272.93	723236.35
162	770235.84	723236.27
163	770321.22	723143.46
164	770358.31	723143.55
165	770395.39	723143.64
166	770395.18	723236.64
167	770358.09	723236.55
168	770321.01	723236.46
169	770406.34	723167.66
170	770443.42	723167.75
171	770480.50	723167.84
172	770480.35	723234.84
173	770443.26	723234.75
174	770443.26	723236.75
175	770406.18	723236.66
176	770491.56	723143.86
177	770528.64	723143.95
178	770565.72	723144.03
179	770565.51	723237.03
180	770528.42	723236.95
181	770491.34	723236.86
182	770576.67	723168.06
183	770613.75	723168.15
184	770650.83	723168.23
185	770650.70	723227.23
186	770642.68	723235.21
187	770613.60	723235.15
188	770613.59	723237.15
189	770576.51	723237.06
190	770684.85	723396.31
191	770647.76	723396.22
192	770610.68	723396.14
193	770610.90	723303.14
194	770647.98	723303.23
195	770685.06	723303.31
196	770597.68	723372.11
197	770560.59	723372.02
198	770523.51	723371.94
199	770523.67	723304.94
200	770565.95	723305.02
201	770560.76	723303.02
202	770597.84	723303.11
203	770510.51	723396.00
204	770473.43	723395.91
205	770436.35	723395.83
206	770436.56	723302.83
207	770473.65	723302.91
208	770510.73	723303.00
209	770352.20	723371.54
210	770315.11	723371.45
211	770278.03	723371.36
212	770278.18	723304.36
213	770315.27	723304.45
214	770315.27	723302.45
215	770352.36	723302.54
216	770263.97	723395.51
217	770226.89	723395.42
218	770189.81	723395.34
219	770190.02	723302.34
220	770227.11	723302.42

COORDINATE TABLE:

POINT#	NORTHING	EASTING
221	770264.19	723302.51
222	770175.86	723371.13
223	770138.78	723371.04
224	770101.70	723370.95
225	770101.85	723303.95
226	770138.94	723304.04
227	770138.94	723302.04
228	770176.02	723302.13
229	770087.64	723395.51
230	770050.56	723395.42
231	770013.47	723395.34
232	770013.69	723302.34
233	770050.77	723302.42
234	770087.86	723302.51
235	769999.56	723370.72
236	769962.48	723370.63
237	769925.40	723370.54
238	769925.55	723303.54
239	769962.64	723303.63
240	769962.64	723301.63
241	769999.72	723301.72
242	769911.34	723398.66
243	769874.26	723398.58
244	769837.17	723398.49
245	769837.39	723305.49
246	769874.47	723305.58
247	769911.56	723305.66
248	769821.08	723357.05
249	769821.00	723394.13
250	769820.91	723431.22
251	769753.91	723431.06
252	769754.00	723393.98
253	769752.00	723393.97
254	769752.05	723368.89
255	769764.08	723356.92
256	769820.88	723442.22
257	769820.80	723479.30
258	769820.71	723516.38
259	769753.71	723516.23
260	769753.80	723479.14
261	769751.80	723479.14
262	769751.88	723442.06
263	769835.61	723480.23
264	769872.68	723481.18
265	769909.75	723482.13
266	769907.37	723575.10
267	769870.30	723574.15
268	769833.22	723573.20
269	769923.14	723506.48
270	769960.21	723507.43
271	769997.29	723508.39
272	769995.57	723575.36
273	769958.49	723574.41
274	769958.44	723576.41
275	769921.37	723575.46
276	770011.91	723484.75
277	770048.98	723485.71
278	770086.05	723486.66
279	770083.66	723579.63
280	770046.59	723578.68
281	770009.52	723577.72
282	770099.44	723511.01
283	770136.51	723511.96
284	770173.58	723512.91
285	770171.86	723579.89
286	770134.79	723578.94
287	770134.74	723580.94
288	770097.67	723579.99
289	770188.20	723489.28
290	770225.27	723490.23
291	770262.34	723491.19
292	770259.96	723584.16
293	770222.89	723583.20
294	770185.81	723582.25
295	770275.73	723515.54
296	770312.81	723516.

WAUKEE FAMILY TOWNHOMES PLAT 1

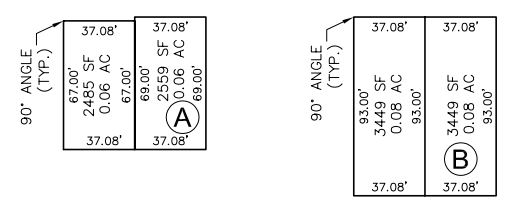
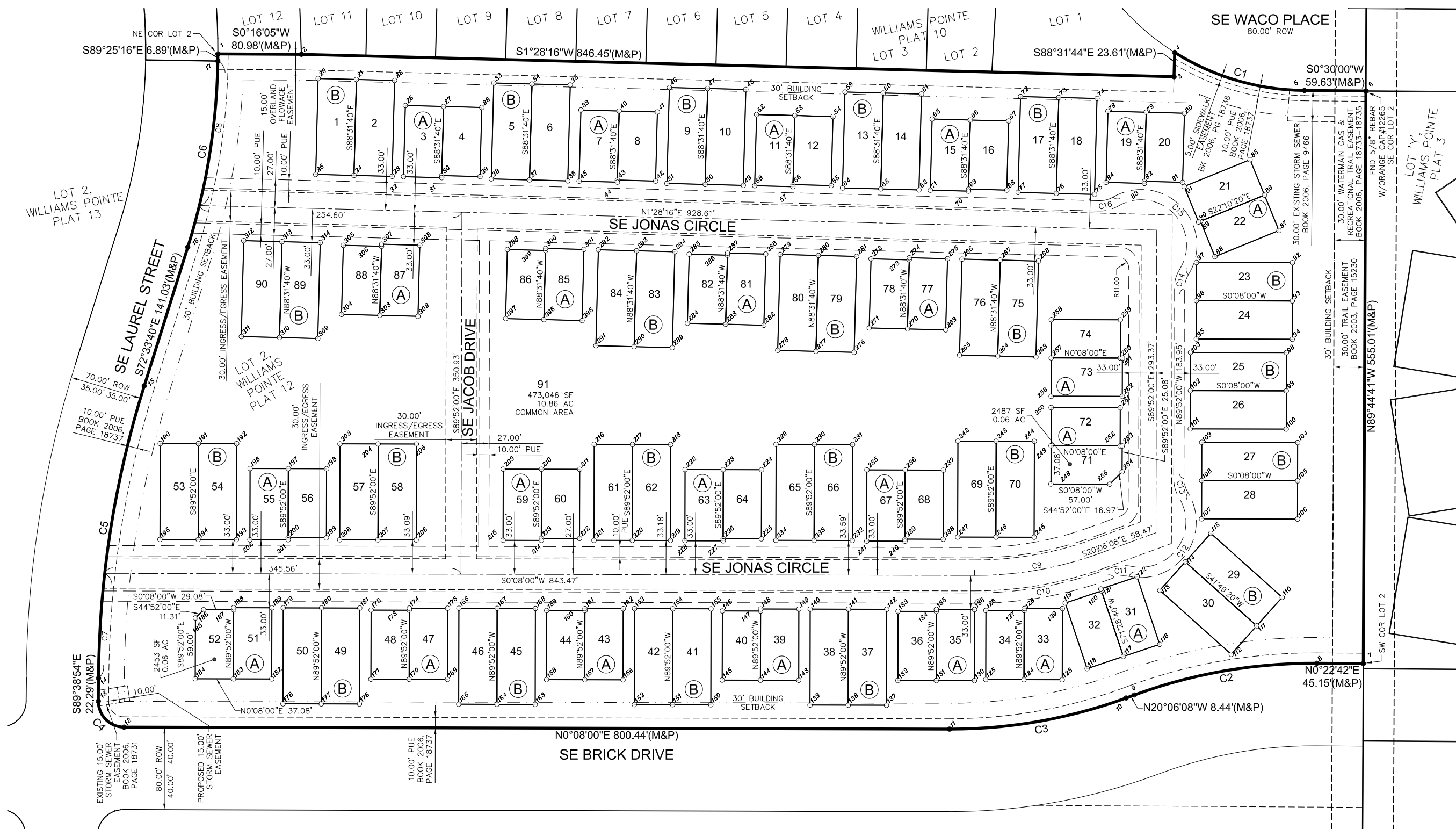
FINAL PLAT

DATE	
REVISIONS	
FIRST SUBMITTAL	08-17-10

5501 NW 112th SUITE G GRIMES, IOWA 50111
 PH: (515) 369-4400 Fax: (515) 369-4410
 ENGINEER: ---
 TECH: ---

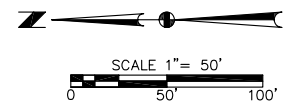


WAUKEE FAMILY TOWNHOMES PLAT 1 FINAL PLAT
 WAUKEE, IOWA
 1007242



LEGEND:

	FOUND	SET
SECTION CORNER AS NOTED	▲	△
1/2" REBAR, YELLOW CAP #16747 (UNLESS OTHERWISE NOTED)	●	○
PLATTED BEARING & DISTANCE	P	
MEASURED BEARING & DISTANCE	M	
RECORDED BEARING & DISTANCE	R	
DEEDED BEARING & DISTANCE	D	
MINIMUM PROTECTION ELEVATION	MPE	
PUBLIC UTILITY EASEMENT	P.U.E.	
CENTERLINE	---	
SECTION LINE	---	
EASEMENT LINE	---	



H:\2010\1007242\Draw\1007242-Final Plats.dwg, 8/20/2010 1:04:23 PM, Adobe PDF