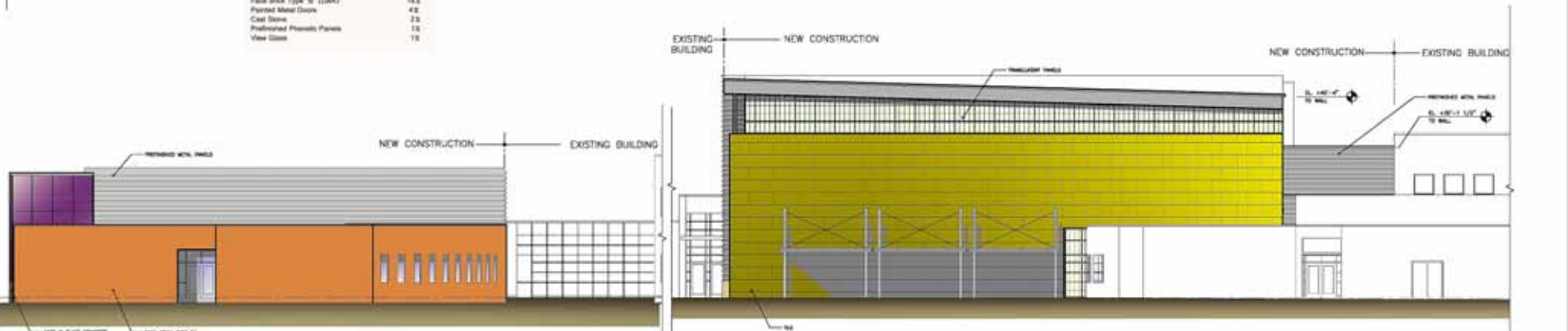


Field House North Elevation Materials

Translucent Panels	55.5
Polished Metal Panels	23.2
Face Brick Type 'W' (Dark)	18.0
Painted Metal Doors	4.2
Cast Stone	2.8
Polished Phenolic Panels	1.2
View Glass	1.8

**SOUTH ELEVATION • FIELD HOUSE**  
SCALE: 1/8"=1'-0"



Classroom Wing East Elevation Materials

Face Brick Type 'K' (Light)	45.5
Polished Metal Panels	32.0
View Glass	13.2
Polished Phenolic Panels	3.2
Cast Stone	2.8
Painted Metal Doors	1.8

Classroom Wing North Elevation Materials

Face Brick Type 'W' (Light)	78.8
View Glass	11.2
Polished Metal Panels	7.8
Translucent Panels	5.8
Painted Metal Doors	1.8

Field House East Elevation Materials

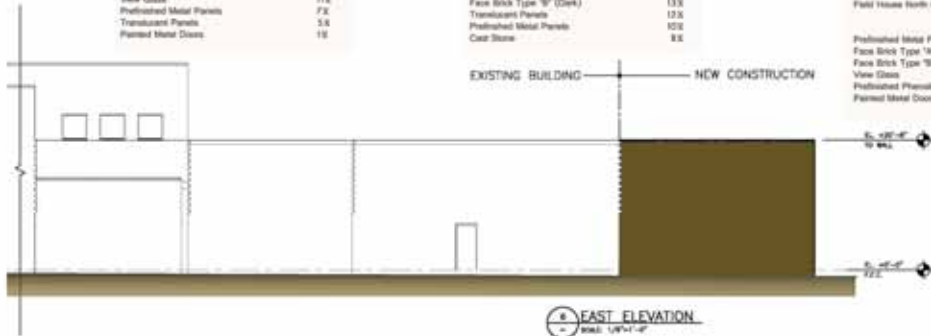
Polished Phenolic Panels	57.2
Face Brick Type 'W' (Dark)	13.2
Translucent Panels	12.8
Polished Metal Panels	10.2
Cast Stone	8.8

Field House North Elevation Materials (see above)

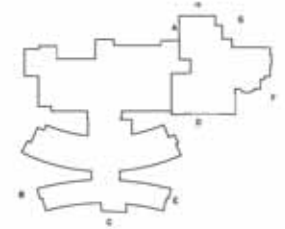
Polished Metal Panels	52.2
Face Brick Type 'W' (Light)	23.2
Face Brick Type 'W' (Dark)	14.2
View Glass	8.2
Polished Phenolic Panels	1.2
Painted Metal Doors	1.8

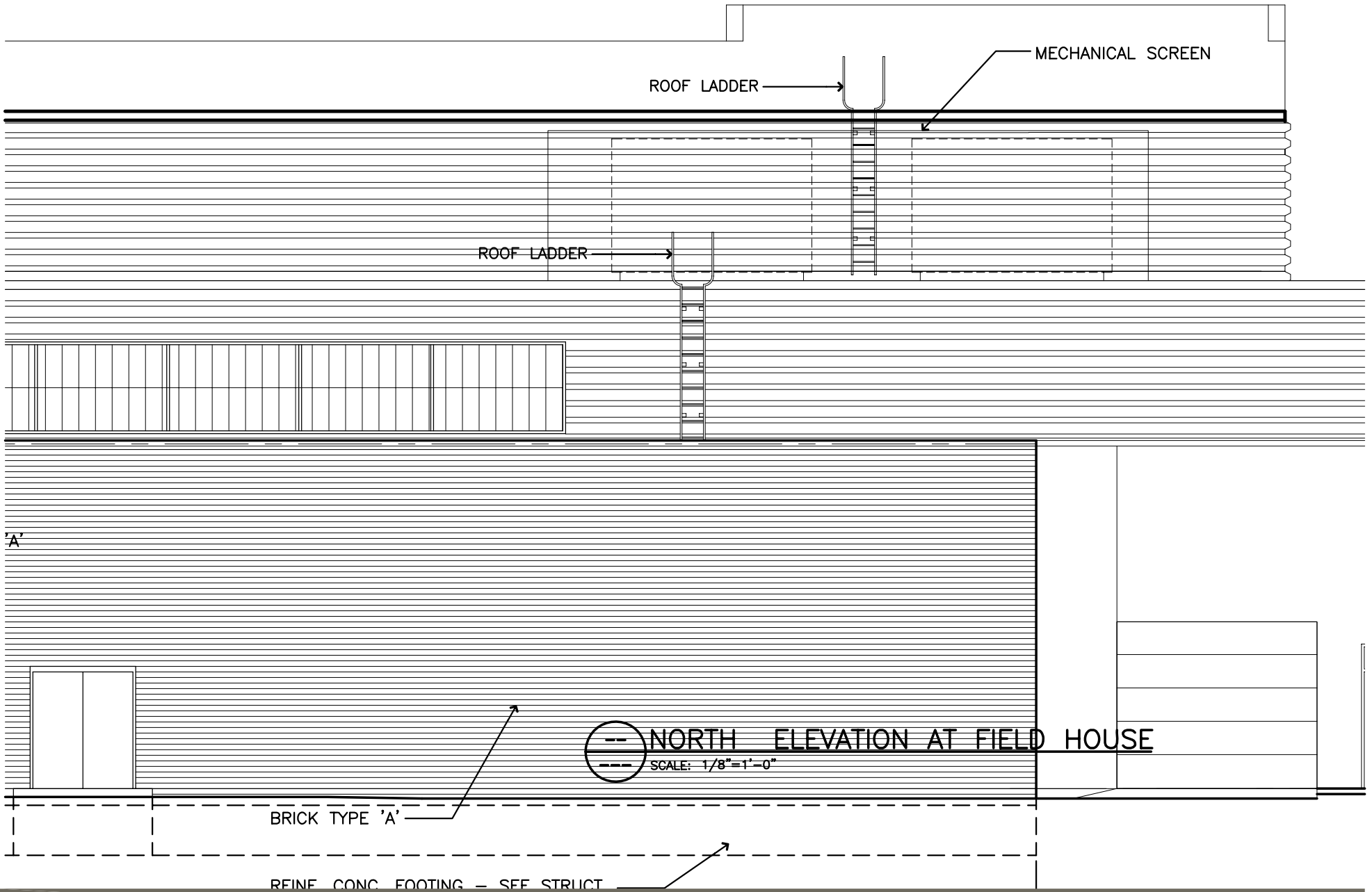
**EAST ELEVATION • CLASSROOM WING**  
SCALE: 1/8"=1'-0"

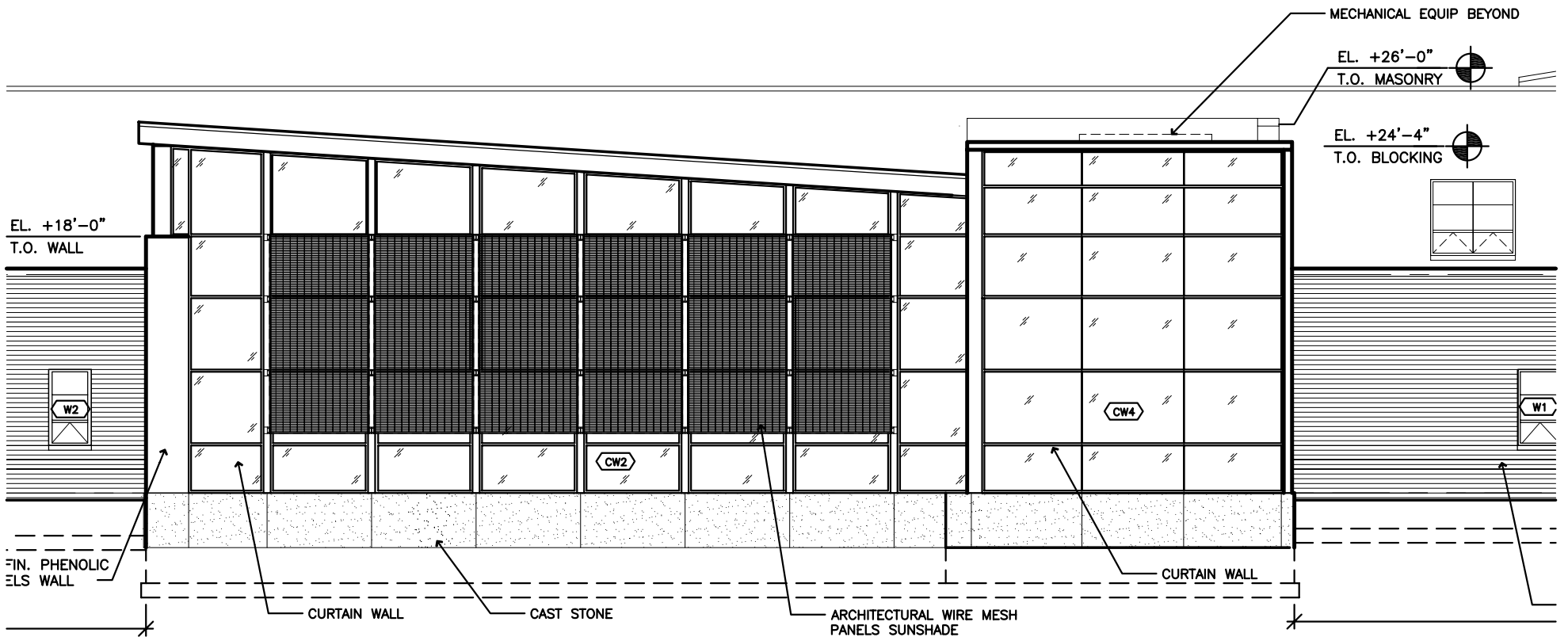
**EAST ELEVATION • FIELD HOUSE**  
SCALE: 1/8"=1'-0"

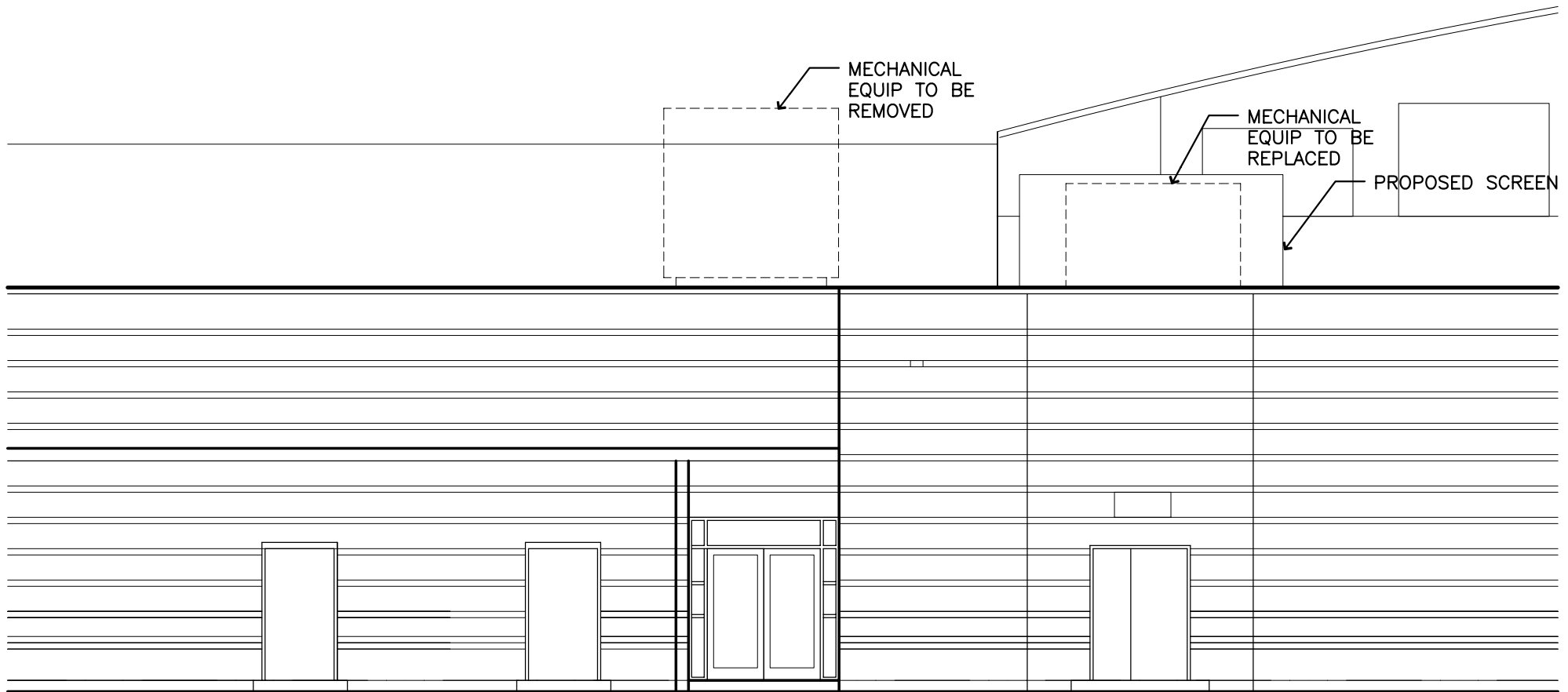


**EAST ELEVATION • CLASSROOM WING**  
SCALE: 1/8"=1'-0"









-- RECEIVING ELEVATION  
--- SCALE: 1/8"=1'-0"

