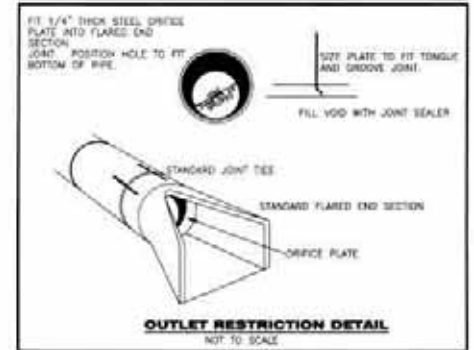
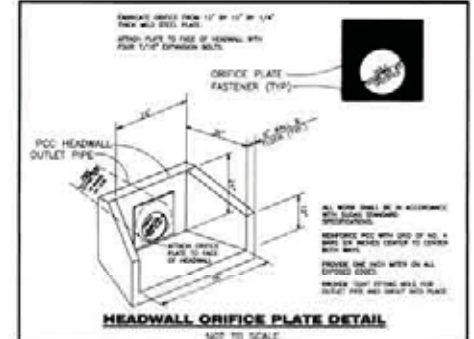
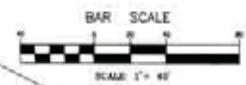
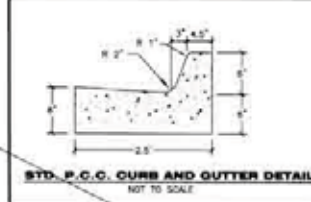




**Design Alliance Inc.**  
 1425 University Ave  
 Suite 110  
 Waukee, Iowa 50263  
 P: 515-225-3488  
 F: 515-225-9649  
 Copyright 2006

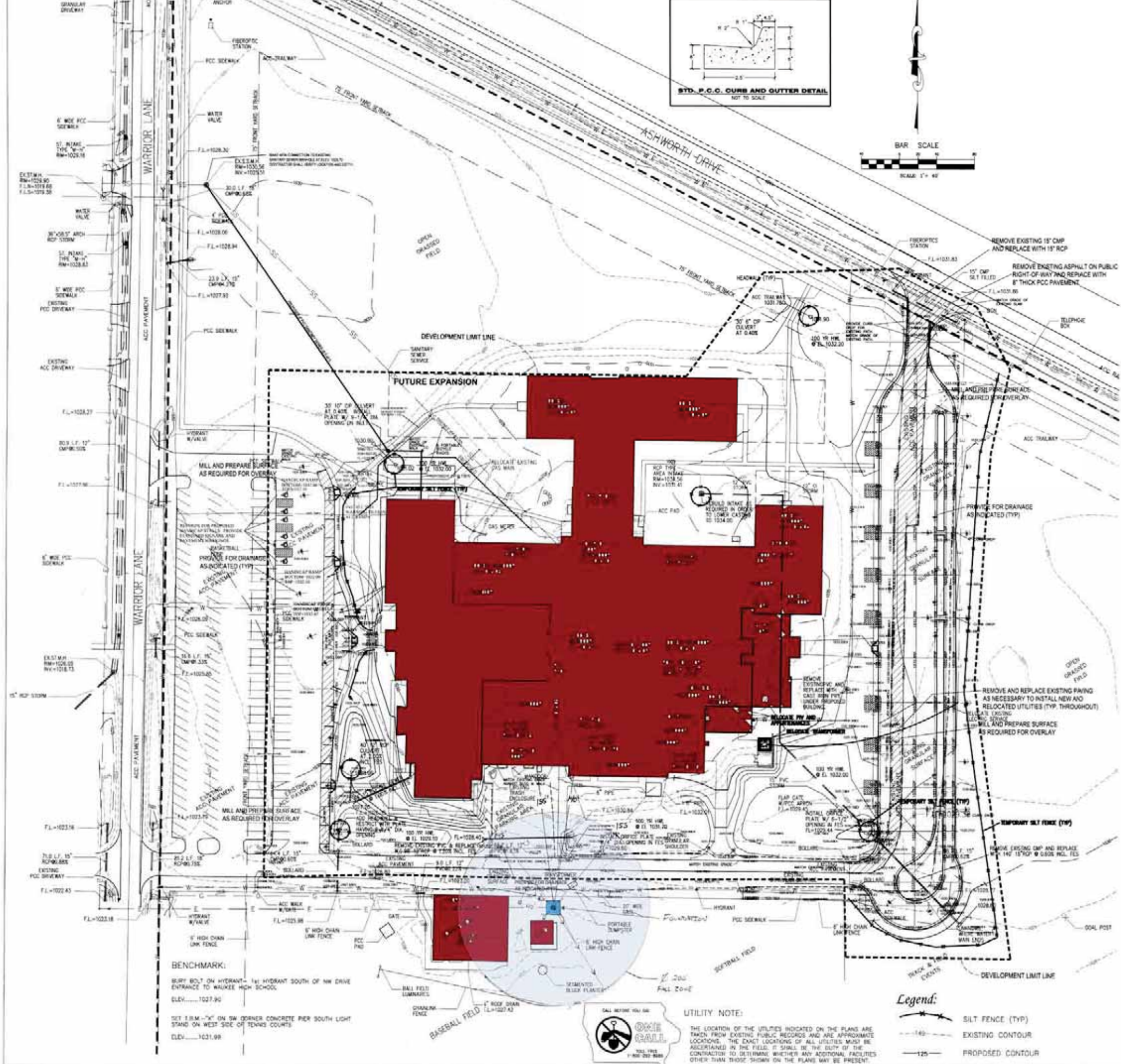
**GENERAL NOTES:**

1. ALL PAVING & UTILITY WORK SHALL COMPLY WITH THE STATEWIDE URBAN STANDARD SPECIFICATIONS FOR PUBLIC IMPROVEMENTS INCLUDING THE CITY OF WAUKEE SUPPLEMENTAL SPECIFICATIONS.
2. CONTRACTOR SHALL ADJUST ALL UTILITIES TO THE FINISH GRADE. UTILITY ADJUSTMENTS SHALL BE INCLUDED IN THE BID FOR GRADING.
3. THE CONTRACTOR SHALL BE RESPONSIBLE FOR THE LOCATION OF ALL UTILITIES. ANY DAMAGE TO SAID UTILITIES SHALL BE REPAIRED AT THE CONTRACTORS EXPENSE.
4. ALL WORK SHALL BE DONE IN ACCORDANCE WITH THE CURRENT O.S.H.A. CODES AND STANDARDS. NOTHING INDICATED ON THESE PLANS SHALL RELIEVE THE CONTRACTOR FROM COMPLYING WITH THE APPROPRIATE SAFETY REGULATIONS.
5. THE DEVELOPERS SOILS ENGINEER SHALL MONITOR THE GRADING OF THE PAYMENT SUBGRADE, AND PROVIDE DENSITY TESTS. THE SOILS ENGINEER SHALL INSPECT THE FINISHED SURFACE PRIOR TO PAVING TO DETERMINE IF ADDITIONAL WORK IS REQUIRED. SOILS TEST RESULTS SHALL BE SUBMITTED TO AND APPROVED BY THE OWNER PRIOR TO ANY CONSTRUCTION.
6. CONTRACTOR SHALL CONTACT CITY OF WAUKEE 48 HOURS PRIOR TO CONSTRUCTION.
7. CONTRACTOR SHALL PICK UP ANY DEBRIS SPILLED ONTO THE ADJACENT PROPERTY AND RIGHT OF WAY AS THE RESULT OF CONSTRUCTION.
8. CONTRACTOR TO OBTAIN ANY AND ALL NECESSARY PERMITS FROM CITY OF WAUKEE.
9. THE PAVING CONTRACTOR SHALL BACKFILL THE PAVING SLAB AND FINE GRADE THE LANDSCAPED AREAS AS SOON AFTER THE PAVING AS POSSIBLE. LANDSCAPED AREAS SHALL BE SEEDED OR SOOCCED IN ACCORDANCE WITH THE URBAN STANDARD SPECIFICATIONS FOR PUBLIC IMPROVEMENTS.
10. UNLESS OTHERWISE NOTED, SANITARY SEWER, STORM SEWER, AND WATER MAIN PIPE MATERIALS SHALL BE SCHED 40 WALL PVC MEETING THE URBAN STANDARDS AND THE CITY OF WAUKEE PLUMBING CODE. FITTINGS SHALL BE CAST IRON MECHANICAL JOINT FITTINGS WITH PROPER RESTRAINT AND CORROSION PROTECTION.



**LEGEND**

- |                                 |                  |
|---------------------------------|------------------|
| ▲ FOUND BENCH CORNER MARKING    | ● UNKOWN MARKING |
| ● FOUND MARKING                 | ○ UTILITY PIPE   |
| ● FOUND BENCH CORNER MARKING    | ○ STEEL CULVERT  |
| ● FOUND 12" DIA. CONCRETE PIPE  | ○ WOOD CULVERT   |
| ● FOUND 18" DIA. CONCRETE PIPE  | ○ TRAFFIC SIGN   |
| ● FOUND 24" DIA. CONCRETE PIPE  | ○ TRAFFIC SIGN   |
| ● FOUND 30" DIA. CONCRETE PIPE  | ○ TRAFFIC SIGN   |
| ● FOUND 36" DIA. CONCRETE PIPE  | ○ TRAFFIC SIGN   |
| ● FOUND 42" DIA. CONCRETE PIPE  | ○ TRAFFIC SIGN   |
| ● FOUND 48" DIA. CONCRETE PIPE  | ○ TRAFFIC SIGN   |
| ● FOUND 54" DIA. CONCRETE PIPE  | ○ TRAFFIC SIGN   |
| ● FOUND 60" DIA. CONCRETE PIPE  | ○ TRAFFIC SIGN   |
| ● FOUND 66" DIA. CONCRETE PIPE  | ○ TRAFFIC SIGN   |
| ● FOUND 72" DIA. CONCRETE PIPE  | ○ TRAFFIC SIGN   |
| ● FOUND 78" DIA. CONCRETE PIPE  | ○ TRAFFIC SIGN   |
| ● FOUND 84" DIA. CONCRETE PIPE  | ○ TRAFFIC SIGN   |
| ● FOUND 90" DIA. CONCRETE PIPE  | ○ TRAFFIC SIGN   |
| ● FOUND 96" DIA. CONCRETE PIPE  | ○ TRAFFIC SIGN   |
| ● FOUND 102" DIA. CONCRETE PIPE | ○ TRAFFIC SIGN   |
| ● FOUND 108" DIA. CONCRETE PIPE | ○ TRAFFIC SIGN   |
| ● FOUND 114" DIA. CONCRETE PIPE | ○ TRAFFIC SIGN   |
| ● FOUND 120" DIA. CONCRETE PIPE | ○ TRAFFIC SIGN   |
| ● FOUND 126" DIA. CONCRETE PIPE | ○ TRAFFIC SIGN   |
| ● FOUND 132" DIA. CONCRETE PIPE | ○ TRAFFIC SIGN   |
| ● FOUND 138" DIA. CONCRETE PIPE | ○ TRAFFIC SIGN   |
| ● FOUND 144" DIA. CONCRETE PIPE | ○ TRAFFIC SIGN   |
| ● FOUND 150" DIA. CONCRETE PIPE | ○ TRAFFIC SIGN   |
| ● FOUND 156" DIA. CONCRETE PIPE | ○ TRAFFIC SIGN   |
| ● FOUND 162" DIA. CONCRETE PIPE | ○ TRAFFIC SIGN   |
| ● FOUND 168" DIA. CONCRETE PIPE | ○ TRAFFIC SIGN   |
| ● FOUND 174" DIA. CONCRETE PIPE | ○ TRAFFIC SIGN   |
| ● FOUND 180" DIA. CONCRETE PIPE | ○ TRAFFIC SIGN   |
| ● FOUND 186" DIA. CONCRETE PIPE | ○ TRAFFIC SIGN   |
| ● FOUND 192" DIA. CONCRETE PIPE | ○ TRAFFIC SIGN   |
| ● FOUND 198" DIA. CONCRETE PIPE | ○ TRAFFIC SIGN   |
| ● FOUND 204" DIA. CONCRETE PIPE | ○ TRAFFIC SIGN   |
| ● FOUND 210" DIA. CONCRETE PIPE | ○ TRAFFIC SIGN   |
| ● FOUND 216" DIA. CONCRETE PIPE | ○ TRAFFIC SIGN   |
| ● FOUND 222" DIA. CONCRETE PIPE | ○ TRAFFIC SIGN   |
| ● FOUND 228" DIA. CONCRETE PIPE | ○ TRAFFIC SIGN   |
| ● FOUND 234" DIA. CONCRETE PIPE | ○ TRAFFIC SIGN   |
| ● FOUND 240" DIA. CONCRETE PIPE | ○ TRAFFIC SIGN   |
| ● FOUND 246" DIA. CONCRETE PIPE | ○ TRAFFIC SIGN   |
| ● FOUND 252" DIA. CONCRETE PIPE | ○ TRAFFIC SIGN   |
| ● FOUND 258" DIA. CONCRETE PIPE | ○ TRAFFIC SIGN   |
| ● FOUND 264" DIA. CONCRETE PIPE | ○ TRAFFIC SIGN   |
| ● FOUND 270" DIA. CONCRETE PIPE | ○ TRAFFIC SIGN   |
| ● FOUND 276" DIA. CONCRETE PIPE | ○ TRAFFIC SIGN   |
| ● FOUND 282" DIA. CONCRETE PIPE | ○ TRAFFIC SIGN   |
| ● FOUND 288" DIA. CONCRETE PIPE | ○ TRAFFIC SIGN   |
| ● FOUND 294" DIA. CONCRETE PIPE | ○ TRAFFIC SIGN   |
| ● FOUND 300" DIA. CONCRETE PIPE | ○ TRAFFIC SIGN   |



**UTILITY NOTE:**

THE LOCATION OF THE UTILITIES INDICATED ON THE PLANS ARE TAKEN FROM EXISTING PUBLIC RECORDS AND ARE APPROXIMATE LOCATIONS. THE EXACT LOCATIONS OF ALL UTILITIES MUST BE ASCERTAINED IN THE FIELD. IT SHALL BE THE DUTY OF THE CONTRACTOR TO DETERMINE WHETHER ANY ADDITIONAL FACILITIES OTHER THAN THOSE SHOWN ON THE PLANS MAY BE PRESENT.

**Legend:**

- SILT FENCE (TYP)
- EXISTING CONTOUR
- PROPOSED CONTOUR

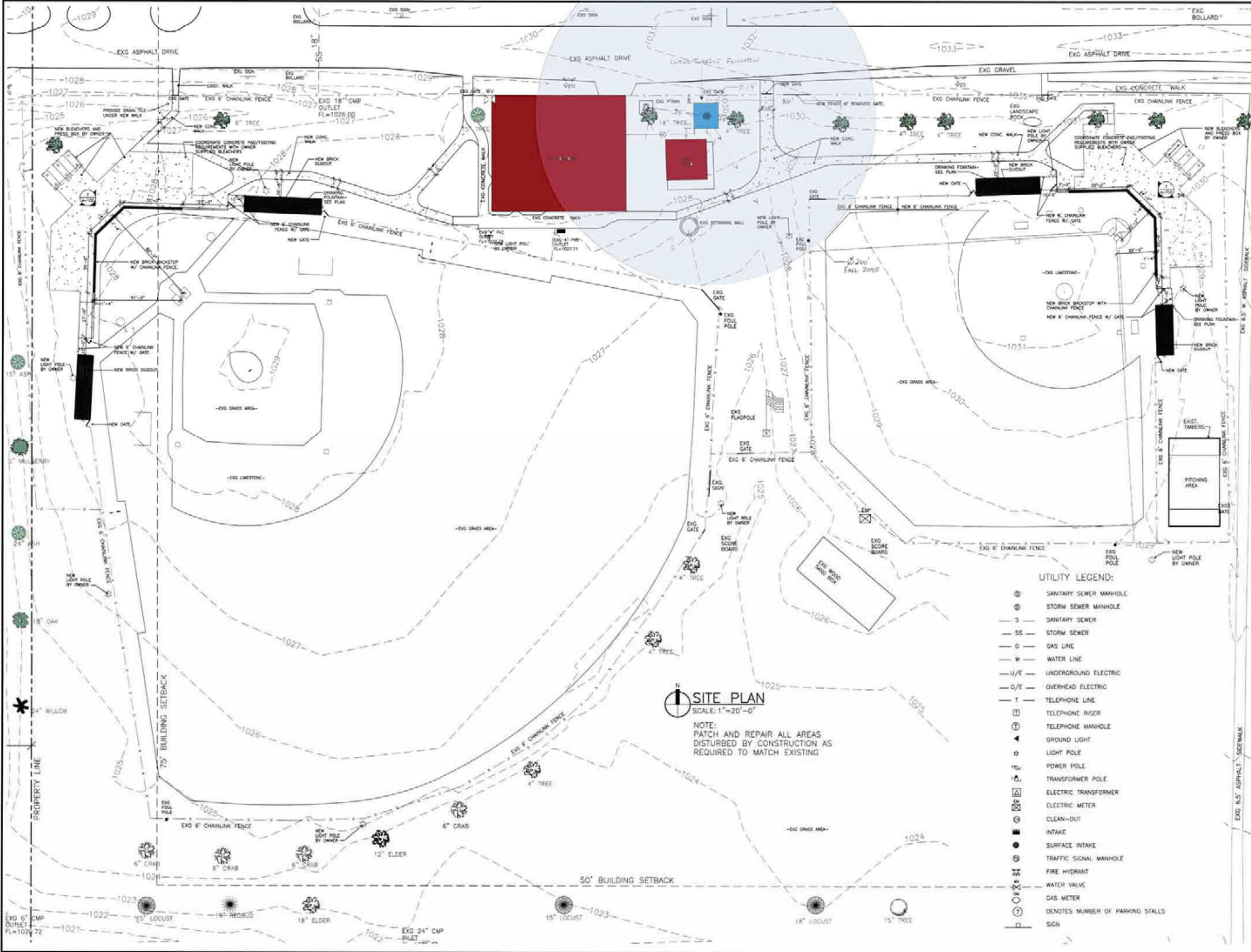
**BENCHMARK:**  
 SURV BOLT ON HYDRANT - 1st HYDRANT SOUTH OF NW DRIVE ENTRANCE TO WAUKEE HIGH SCHOOL  
 ELEV. 1027.90  
 SET 1.8M - "X" ON SW CORNER CONCRETE PER SOUTH LIGHT STAND ON WEST SIDE OF TENNIS COURTS  
 ELEV. 1021.99

**Bishop Engineering**  
 "Planning Your Successful Development"  
 3501 104th Street  
 Des Moines, Iowa 50322-3825  
 Phone: (515) 278-6867 Fax: (515) 278-0217  
 Civil Engineering & Land Surveying Established 1959

**Waukee Middle School Addition & Renovation**  
 905 Warrior Lane - Waukee, Iowa 50263  
 Waukee Community School District

**GRADING & UTILITY PLAN**  
 Project Number: 205017  
 Date: December 7, 2006  
 Revisions: PER CITY COMMENTS December 14, 2006

**C1.2**



4445 CORPORATE DRIVE  
 SUITE 126  
 WEST DES MOINES, IOWA  
 50266-5937  
 PHONE 515-223-5100  
 FAX 515-223-7226

**F REVERT**  
**R RAMSEY**  
**K KOBES**  
**ARCHITECTS**

SITE IMPROVEMENTS FOR  
**WAUKEE ATHLETIC COMPLEX**  
 WAUKEE COMMUNITY SCHOOLS DISTRICT

PROJECT NO.:  
**10181**

DATE:  
 JUNE 2007

REVISIONS:

DRAWING TITLE:  
 SITE PLAN

DRAWING NO.:  
**C-3**

UTILITY LEGEND:

- ⊙ SANITARY SEWER MANHOLE
- ⊕ STORM SEWER MANHOLE
- S — SANITARY SEWER
- SS — STORM SEWER
- G — GAS LINE
- W — WATER LINE
- U/E — UNDERGROUND ELECTRIC
- O/E — OVERHEAD ELECTRIC
- T — TELEPHONE LINE
- ⊞ TELEPHONE RISER
- ⊚ TELEPHONE MANHOLE
- ▲ GROUND LIGHT
- ⊙ LIGHT POLE
- ⊞ POWER POLE
- ⊞ TRANSFORMER POLE
- ⊞ ELECTRIC TRANSFORMER
- ⊞ ELECTRIC METER
- ⊞ CLEAN-OUT
- INTAKE
- SURFACE INTAKE
- ⊞ TRAFFIC SIGNAL MANHOLE
- ⊞ FIRE HYDRANT
- ⊞ WATER VALVE
- ⊞ GAS METER
- ⊞ DENOTES NUMBER OF PARKING STALLS
- ⊞ SIGN

**SITE PLAN**  
 SCALE: 1"=20'-0"

NOTE:  
 PATCH AND REPAIR ALL AREAS  
 DISTURBED BY CONSTRUCTION AS  
 REQUIRED TO MATCH EXISTING