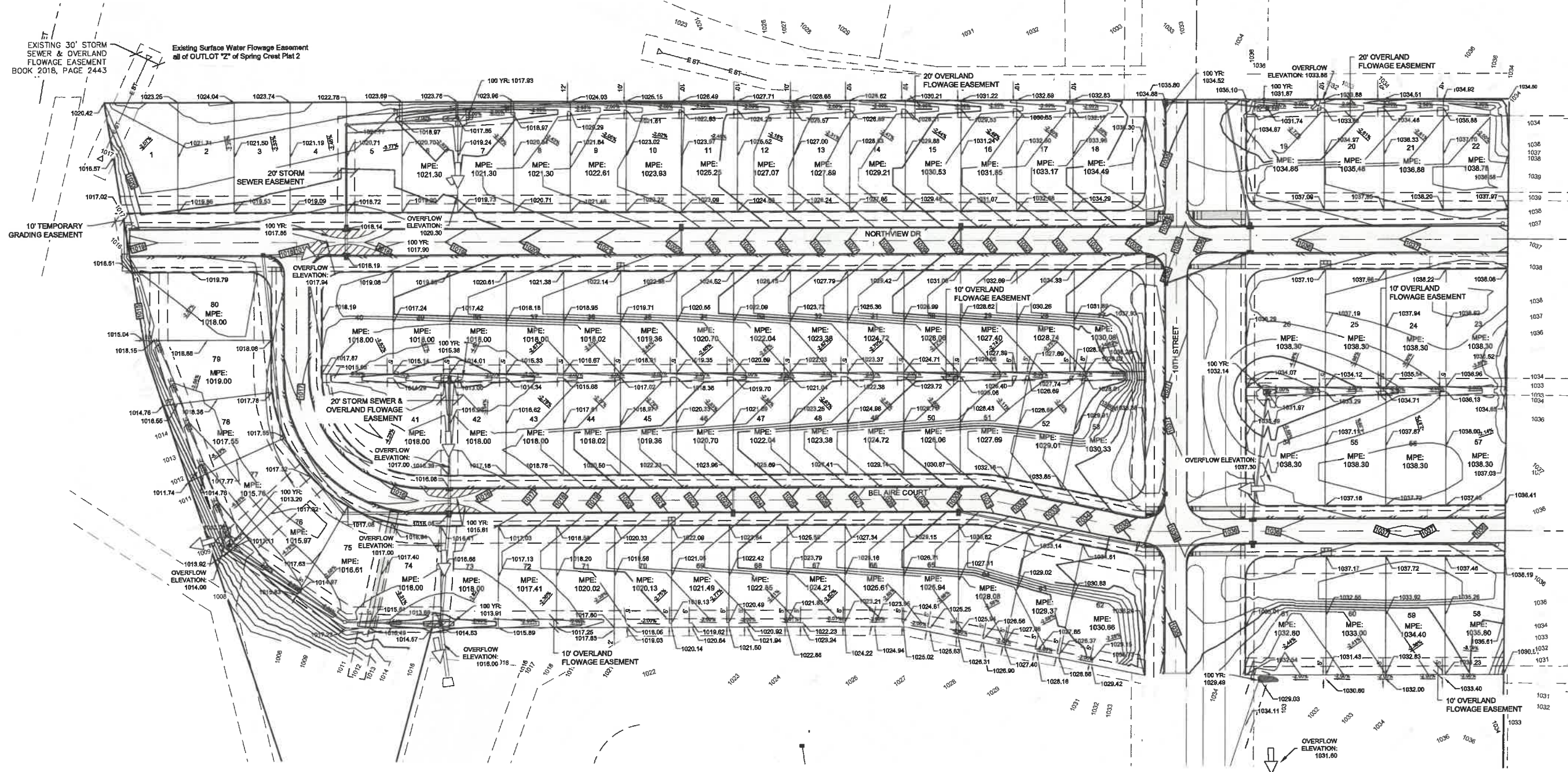
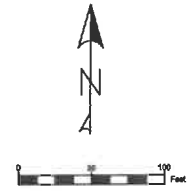


UTILITY NOTE:

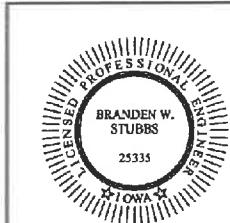
UTILITIES LOCATIONS ARE TAKEN FROM PUBLIC RECORDS AND FIELD SURVEYS. THE SURVEYOR AND ENGINEER MAKE NO GUARANTEE THAT ALL UTILITIES IN THE AREA ARE SHOWN. THE EXACT LOCATIONS AND ELEVATIONS OF ALL UTILITIES SHALL BE DETERMINED BY THE CONTRACTOR. IT IS ALSO THE RESPONSIBILITY OF THE CONTRACTOR TO ESTABLISH IF ANY ADDITIONAL UTILITIES OTHER THAN THE ONES SHOWN ON THE PLANS ARE PRESENT IN THE FIELD.

LOTS 1-4: DETAILED LOT GRADING PLAN WILL BE REQUIRED TO BE SUBMITTED BY THE HOMEOWNER WHEN BUILDING PERMIT IS SUBMITTED.

EMERGENCY OVERFLOW ROUTE



- LEGEND:**
- E W- EXISTING WATER
 - E ST- EXISTING STORM
 - E SB- EXISTING SANITARY
 - P W- PROPOSED WATER
 - P ST- PROPOSED STORM
 - P SB- PROPOSED SANITARY
 - FIRE HYDRANT
 - WATER MAIN VALVE
 - STORM INTAKE
 - STORM FLARED END
 - STORM MANHOLE
 - SANITARY MANHOLE
 - STREET LIGHT



I HEREBY CERTIFY THAT THIS ENGINEERING DOCUMENT WAS PREPARED BY ME OR UNDER MY DIRECT PERSONAL SUPERVISION AND THAT I AM A DULY LICENSED PROFESSIONAL ENGINEER UNDER THE LAWS OF THE STATE OF IOWA.

Branden Stubbs 07-08-22
DATE

BRANDEN W. STUBBS, P.E.
LICENSE NUMBER: 25335
MY LICENSE RENEWAL DATE IS DECEMBER 31, 2022
PAGES OR SHEETS COVERED BY THIS SEAL: 1

DATE: 07/06/22
DRAWN BY: DJS
ENGINEER: BWS
PROJECT NUMBER: 20-575
PAGE NUMBER: 1

AUTUMN VALLEY PLAT 2
WAUKEE, IA

STUBBS ENGINEERING
431 NE 72ND ST. PLEASANT HILL, IA 50337
(515) 878-6489



ENGINEERING EXHIBIT