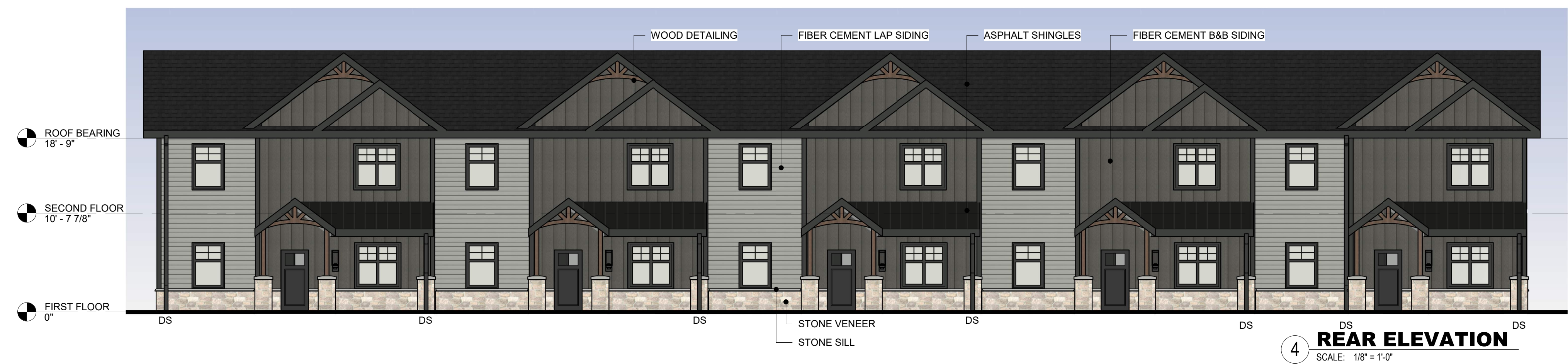
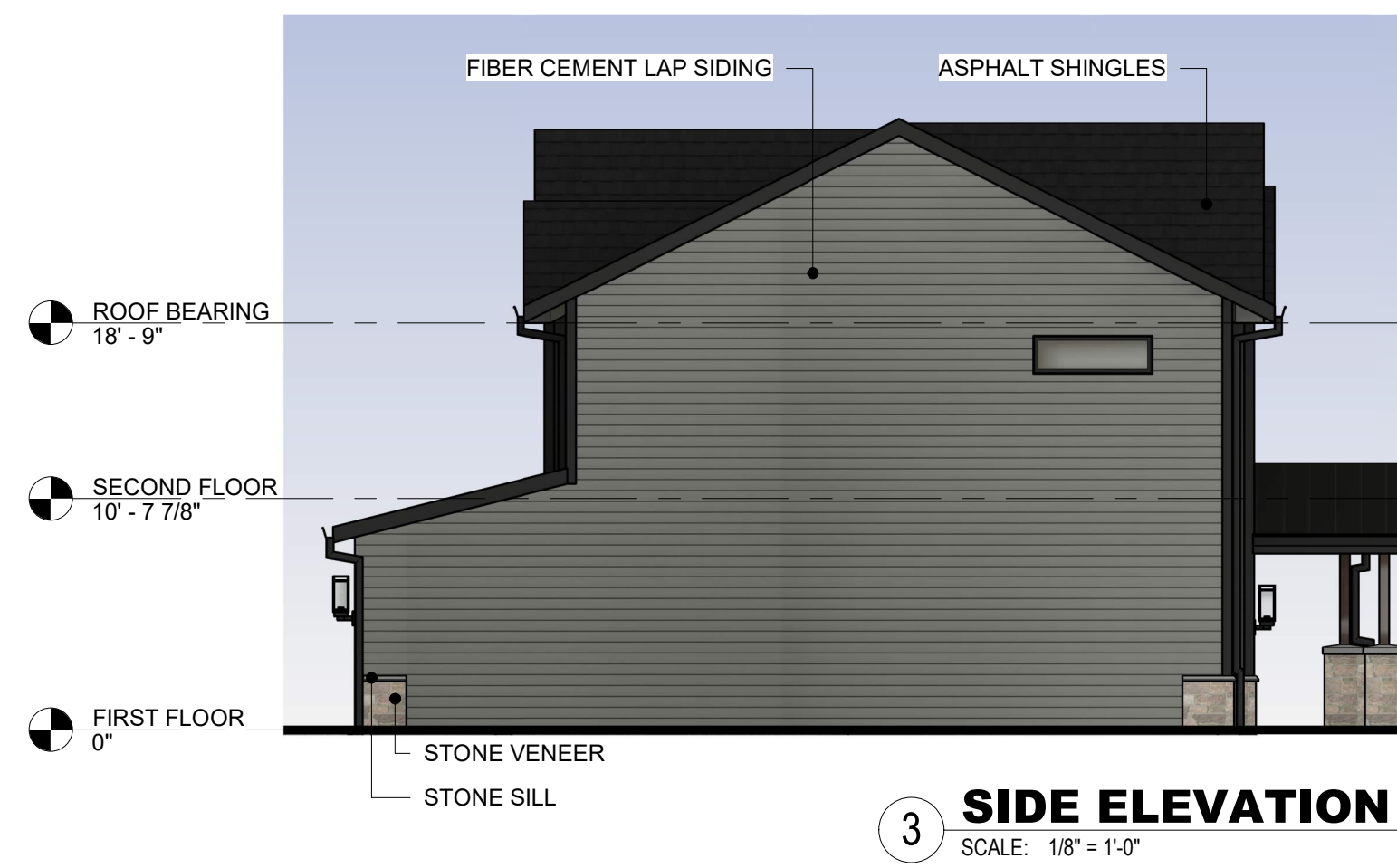
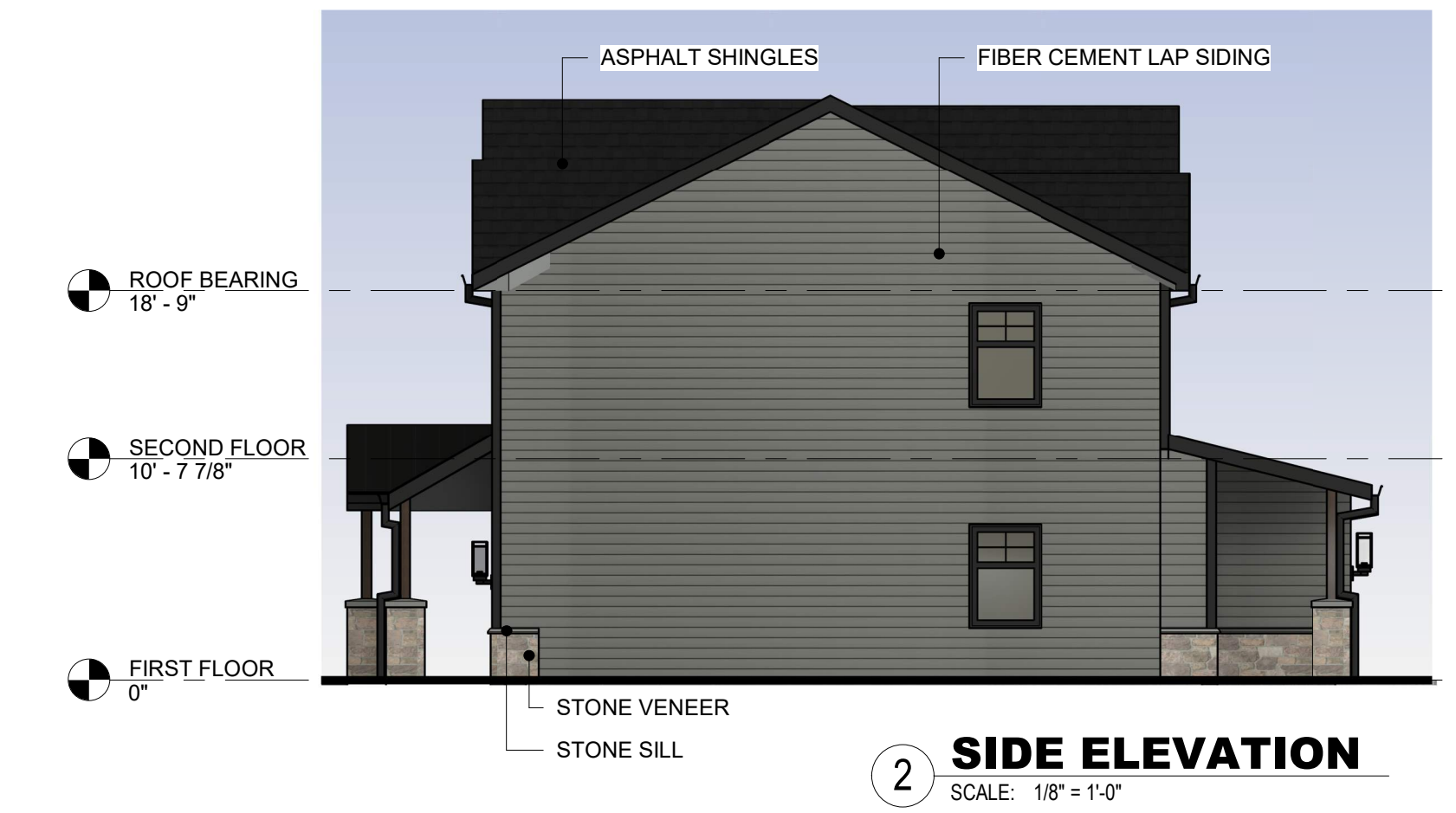


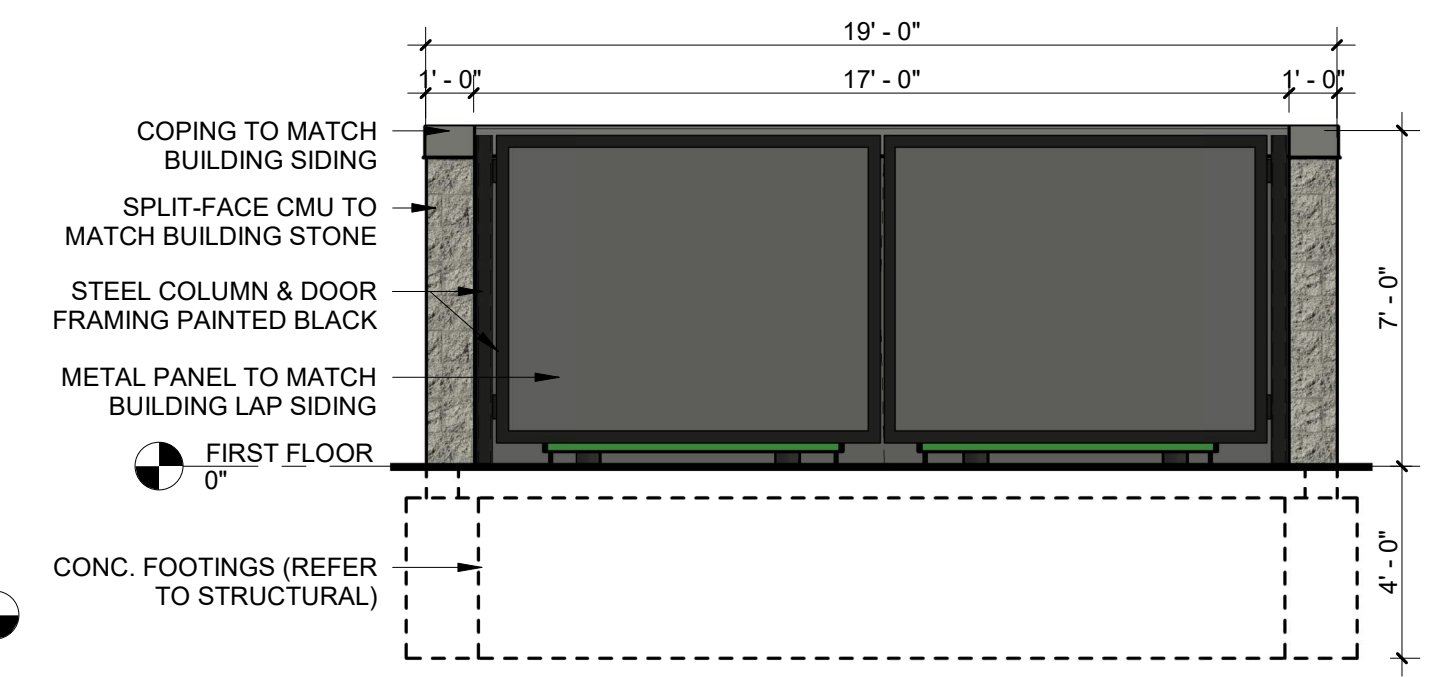
MATERIAL CALCULATIONS			
<b>FRONT ELEVATION:</b> 1,082 SF TOTAL			
STONE VENEER =	288 SF	26.5%	(>20%)
FIBER CEMENT LAP SIDING =	159 SF	14.7%	
FIBER CEMENT B&B SIDING =	635 SF	58.8%	
<b>SIDE ELEVATION:</b> 821 SF TOTAL			
STONE VENEER =	21 SF	2.6%	
FIBER CEMENT LAP SIDING =	800 SF	97.4%	
FIBER CEMENT B&B SIDING =	0 SF	0%	
<b>REAR ELEVATION:</b> 1,630 SF TOTAL			
STONE VENEER =	199 SF	12.2%	
FIBER CEMENT LAP SIDING =	401 SF	24.6%	
FIBER CEMENT B&B SIDING =	1,030 SF	63.2%	
<b>SIDE ELEVATION:</b> 784 SF TOTAL			
STONE VENEER =	39 SF	5%	
FIBER CEMENT LAP SIDING =	745 SF	95%	
FIBER CEMENT B&B SIDING =	0 SF	0%	



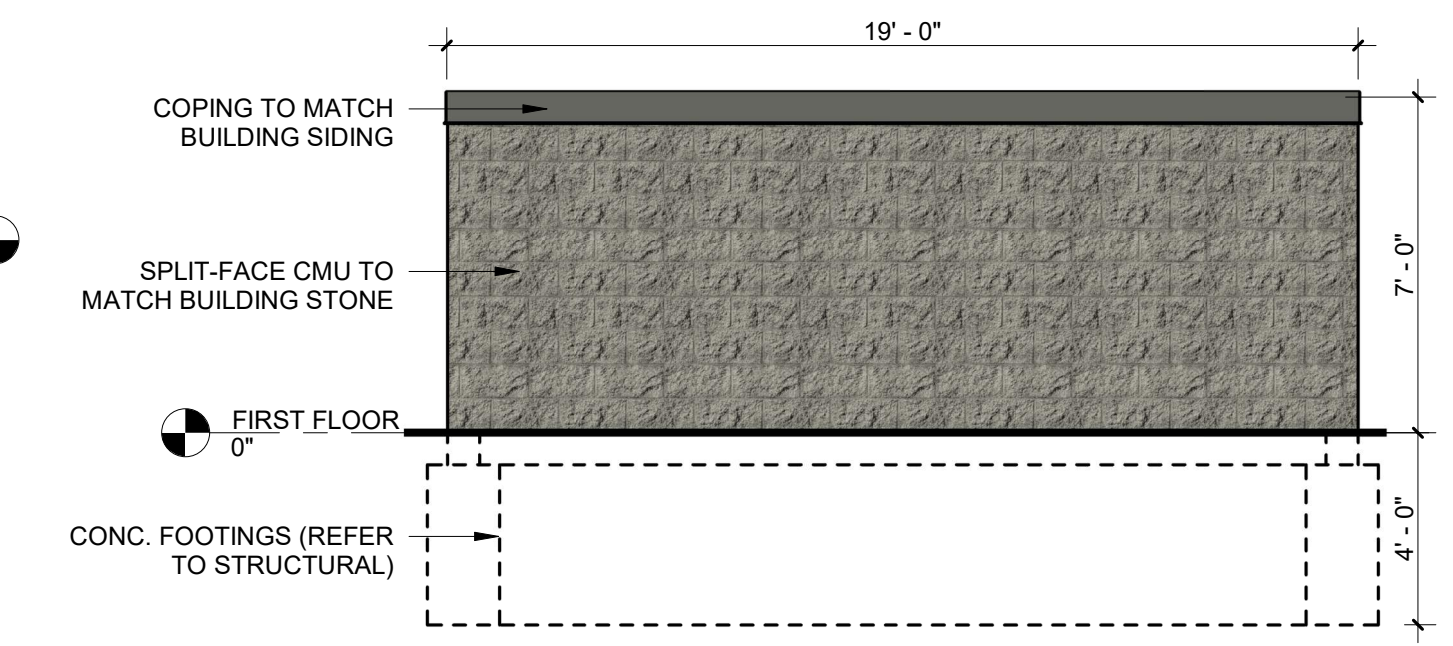
MATERIAL CALCULATIONS			
<b>FRONT ELEVATION: 1,546 SF TOTAL</b>			
STONE VENEER =	407 SF	26.4%	(>20%)
FIBER CEMENT LAP SIDING =	384 SF	24.8%	
FIBER CEMENT B&B SIDING =	755 SF	48.8%	
<b>SIDE ELEVATION: 821 SF TOTAL</b>			
STONE VENEER =	21 SF	2.6%	
FIBER CEMENT LAP SIDING =	800 SF	97.4%	
FIBER CEMENT B&B SIDING =	0 SF	0%	
<b>REAR ELEVATION: 2,490 SF TOTAL</b>			
STONE VENEER =	329 SF	13.3%	
FIBER CEMENT LAP SIDING =	671 SF	26.9%	
FIBER CEMENT B&B SIDING =	1,490 SF	59.8%	
<b>SIDE ELEVATION: 784 SF TOTAL</b>			
STONE VENEER =	39 SF	5%	
FIBER CEMENT LAP SIDING =	745 SF	95%	
FIBER CEMENT B&B SIDING =	0 SF	0%	



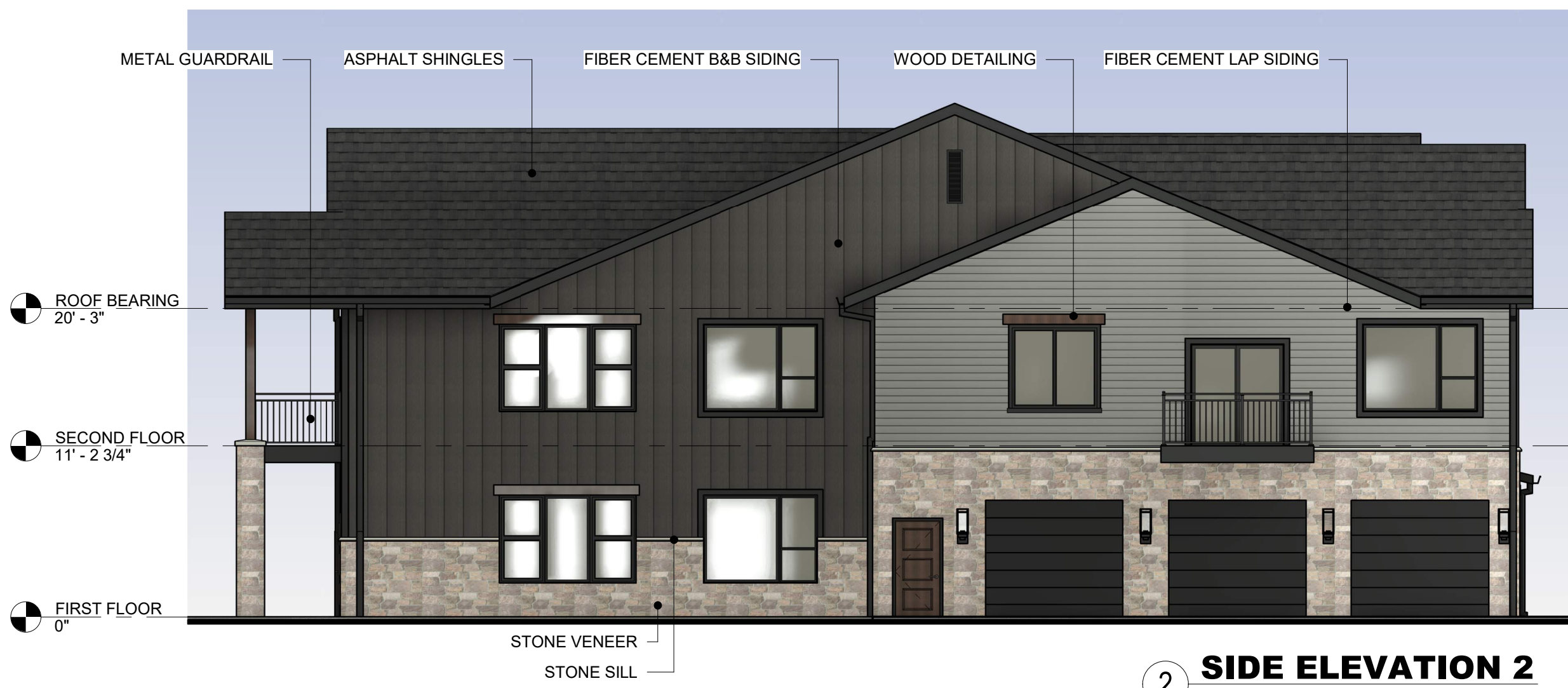
**1 FRONT ELEVATION**  
SCALE: 1/8" = 1'-0"



**5 FRONT ELEVATION**  
SCALE: 1/4" = 1'-0"



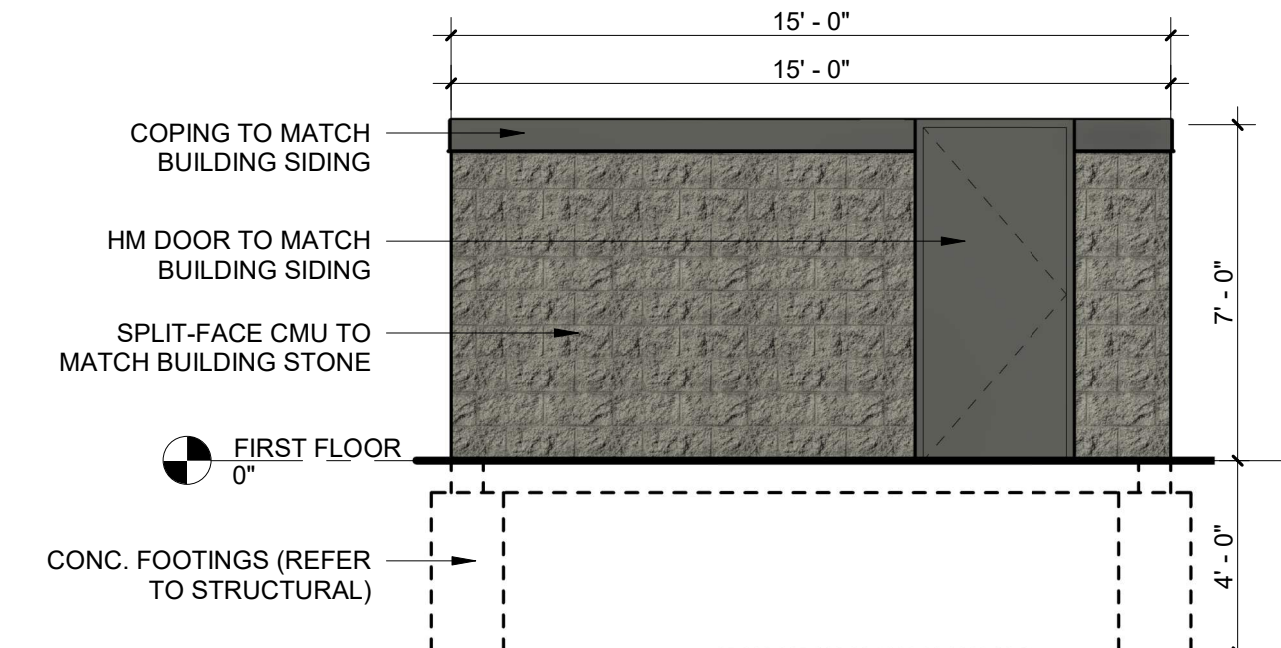
**6 REAR ELEVATION**  
SCALE: 1/4" = 1'-0"



**2 SIDE ELEVATION 2**  
SCALE: 1/8" = 1'-0"



**3 SIDE ELEVATION 1**  
SCALE: 1/8" = 1'-0"



**7 SIDE ELEVATION**  
SCALE: 1/4" = 1'-0"



**4 REAR ELEVATION**  
SCALE: 1/8" = 1'-0"

MATERIAL CALCULATIONS			
<b>FRONT ELEVATION:</b> 3,518 SF TOTAL			
STONE VENEER =	1,423 SF	40.5%	
FIBER CEMENT LAP SIDING =	612 SF	17.3%	
FIBER CEMENT B&B SIDING =	1,454 SF	41.3%	
TRIM / ACCENTS =	29 SF	0.9%	
<b>SIDE ELEVATION(1):</b> 1,989 SF TOTAL			
STONE VENEER =	794 SF	40.0%	
FIBER CEMENT LAP SIDING =	652 SF	32.8%	
FIBER CEMENT B&B SIDING =	524 SF	26.3%	
TRIM / ACCENTS =	19 SF	0.9%	
<b>REAR ELEVATION:</b> 3,466 SF TOTAL			
STONE VENEER =	910 SF	26.3%	
FIBER CEMENT LAP SIDING =	1,066 SF	30.8%	
FIBER CEMENT B&B SIDING =	855 SF	24.7%	
TRIM / ACCENTS =	635 SF	18.2%	
<b>SIDE ELEVATION(2):</b> 1,989 SF TOTAL			
STONE VENEER =	739 SF	37.2%	
FIBER CEMENT LAP SIDING =	485 SF	24.4%	
FIBER CEMENT B&B SIDING =	742 SF	37.3%	
TRIM / ACCENTS =	13 SF	0.7%	
<b>COMBINED AREA:</b> 10,962 SF TOTAL			
STONE VENEER =	3,866 SF	35.3% (>35%)	



This drawing has been prepared by the Architect, or under the Architect's direct supervision. This drawing is provided as an instrument of service by the Designer / Architect and is intended for use on this project only. Any reproduction, use, or disclosure of information contained herein without the prior written consent of the Architect is strictly prohibited. (C) Copyright 2022 by Simonson & Associates Architects, L.L.C.

# PARKSIDE PROPER 12-PLEX VILLA

815 NW DOUGLAS PKWY  
 WAUKEE, IA  
 09/09/2022

24"x36" SHEET (FULL SIZE)  
 - SCALE IS AS NOTED.  
 12"x18" SHEET (HALF SIZE)  
 - SCALE IS ONE-HALF OF WHAT IS NOTED  
 OTHER SHEET SIZES NOT TO SCALE  
 SAA JOB # 21147





**1 FRONT ELEVATION**  
SCALE: 1/8" = 1'-0"



**2 SIDE ELEVATION 2**  
SCALE: 1/8" = 1'-0"



**3 SIDE ELEVATION 1**  
SCALE: 1/8" = 1'-0"



**4 REAR ELEVATION**  
SCALE: 1/8" = 1'-0"

MATERIAL CALCULATIONS			
<b>FRONT ELEVATION: 3,518 SF TOTAL</b>			
STONE VENEER =	1,423 SF	40.5%	
FIBER CEMENT LAP SIDING =	612 SF	17.3%	
FIBER CEMENT B&B SIDING =	1,454 SF	41.3%	
TRIM / ACCENTS =	29 SF	0.9%	
<b>SIDE ELEVATION(1): 1,989 SF TOTAL</b>			
STONE VENEER =	794 SF	40.0%	
FIBER CEMENT LAP SIDING =	452 SF	32.8%	
FIBER CEMENT B&B SIDING =	524 SF	26.3%	
TRIM / ACCENTS =	19 SF	0.9%	
<b>REAR ELEVATION: 3,466 SF TOTAL</b>			
STONE VENEER =	910 SF	26.3%	
FIBER CEMENT LAP SIDING =	1,066 SF	30.8%	
FIBER CEMENT B&B SIDING =	855 SF	24.7%	
TRIM / ACCENTS =	635 SF	18.2%	
<b>SIDE ELEVATION(2): 1,989 SF TOTAL</b>			
STONE VENEER =	739 SF	37.2%	
FIBER CEMENT LAP SIDING =	495 SF	24.8%	
FIBER CEMENT B&B SIDING =	742 SF	37.3%	
TRIM / ACCENTS =	13 SF	0.7%	
<b>COMBINED AREA: 10,962 SF TOTAL</b>			
STONE VENEER =	3,866 SF	35.3% (>35%)	



**NW PERSPECTIVE**



**NE PERSPECTIVE**



**SW PERSPECTIVE**



**SE PERSPECTIVE**



**NE PERSPECTIVE**



**NW PERSPECTIVE**



**SE PERSPECTIVE**



**SW PERSPECTIVE**