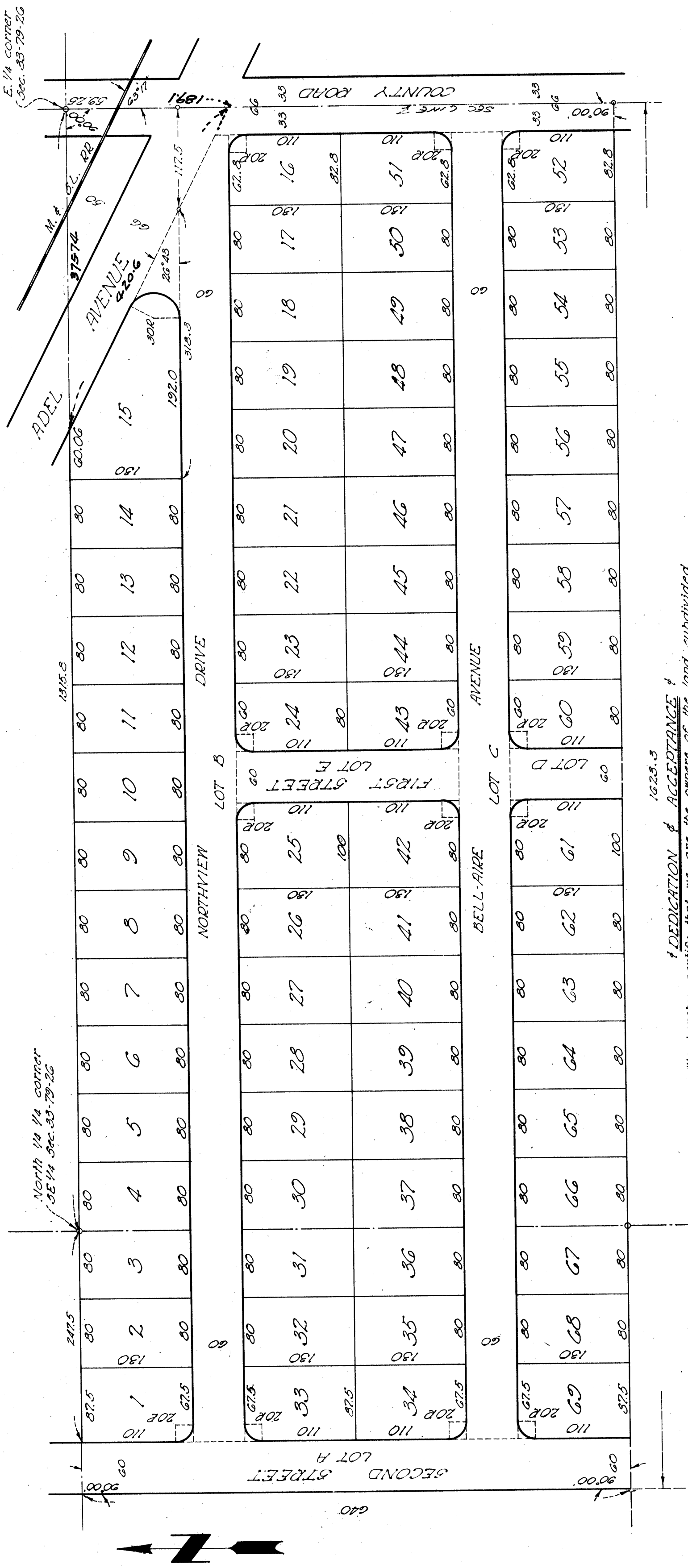


# CORENE ACRES PLAT 1

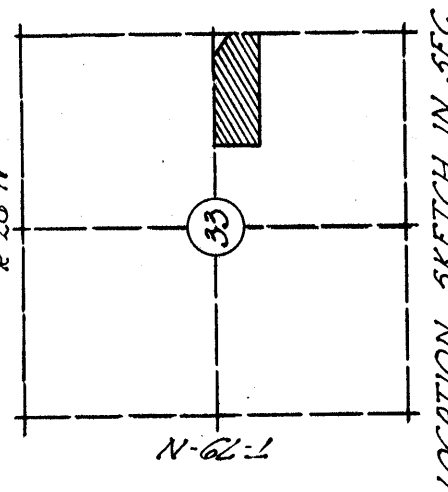
A Subdivision in the town of Waukee of the East 1623.3 feet of the North 640 feet of the S.E. 1/4 Sec. 33, T-79-N, R-26-W, 5th P.M., situated in Dallas County, Iowa.

Scale: 1"=100'



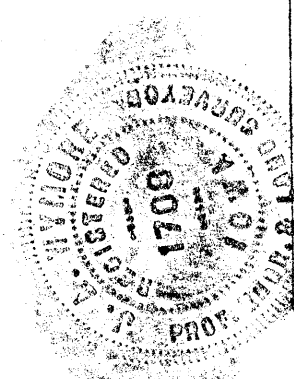
**DEDICATION & ACCEPTANCE**  
 We hereby certify that we are the owners of the land subdivided and platted herewith and that we have a legal right so to do; furthermore we dedicate to the Town of Waukee, Iowa, the above platted lots A, B, C, D, and E as streets for public use and access.

Signed: *Wend Gray*  
 Wend Gray



**CERTIFICATION**  
 I, the undersigned certify herewith that this plat and survey is true and accurate to the best of my knowledge and belief.

Signed: *Philip P. O'Neil*  
 Philip P. O'Neil  
 Mayor  
 City Clerk



LOCATION SKETCH IN SEC. 33