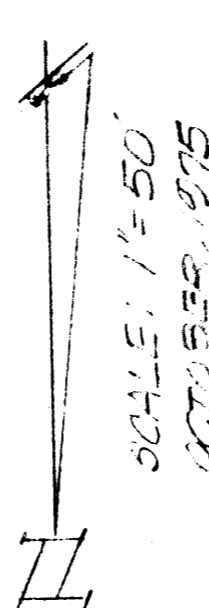
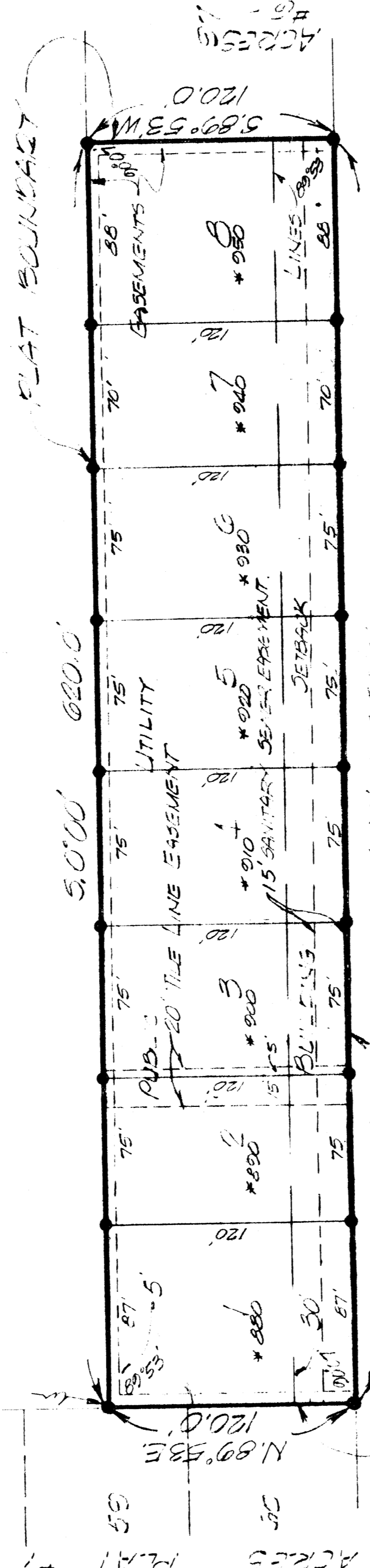


CORENE ACRES PLAT 7

LEGAL DESCRIPTION.

BEGINNING AT A POINT 640.55 FT. S. 89° 53' 15" W. OF THE EAST 1/4 CORNER OF SECTION 33, T. 19 N., R. 26 W. SAID POINT ALSO BEING 120 FT. N. 88° 58' E. OF THE S.W. COR. OF LOT 60, CORENE ACRES PLAT #1, AN ORIGINAL PLAT, THENCE S. 0° 0' 0" E. 620 FT. TO THE N.E. COR. OF LOT 67, CORENE ACRES PLAT #1, AN ORIGINAL PLAT, THENCE S. 89° 53' 15" W. 120 FT. TO THE N.W. COR. OF LOT 17, CORENE ACRES PLAT #1, AN ORIGINAL PLAT, THENCE N. 0° 0' 0" E. ALONG THE EAST LINE OF FIRST STREET LOCATED TO THE S.W. COR. OF LOT 60, CORENE ACRES PLAT #1, AN ORIGINAL PLAT, THENCE N. 88° 58' E. ALONG THE SOUTH LINE OF SAID CORENE ACRES PLAT #1, THENCE TO THE E. 1/4 COR. OF SECTION 33, T. 19 N., R. 26 W., CITY OF WAUKESHA, CALLED AS COUNTY IOWA, AND CONTAINING APPROX. 1.708 ACRES.

E. 1/4 CORNER
SECTION 33, T. 19 N., R. 26 W.
120.0' N. 89° 53' 15" W.
640.55'



● INDICATES IRON ROD SET AT LOT CORNERS
* INDICATES HOUSE NUMBERS

ACRES 61	-CORENE PLAT #1	WALKER AVENUE	ACRES 62	-CORENE PLAT #2	GRAY AVENUE	ACRES 40	-CORENE PLAT #4	ACRES 63	-CORENE PLAT #5
-------------	--------------------	------------------	-------------	--------------------	----------------	-------------	--------------------	-------------	--------------------

Entered for Taxation the 22nd day of January, 1976
Robert B. Buehler Auditor
Betty Jerome Deputy

SECTION 17.0
 I HEREBY CERTIFY THAT THIS PLAT WAS PREPARED BY ME OR UNDER MY DIRECT PERSONAL SUPERVISION AND THAT I AM A DULY REGISTERED PROFESSIONAL ENGINEER AND LAND SURVEYOR UNDER THE LAWS OF THE STATE OF IOWA.
Henry S. Oakes
 HENRY S. OAKES P.E. - S. 522
 12-16-75 DATE

Revised 5-6-76
 Bl 4 Pg. 503

SCALE: 1" = 50'	APPROVED BY:
DATE: NOV 1975	<i>Henry S. Oakes</i>
DRAWN BY: <i>Henry S. Oakes</i>	
REVISED: 5-6-76	
CORENE ACRES PLAT SEVEN	
OAKES ENGINEERING COMPANY	
DES MOINES, IOWA	
040 - 65TH STREET	50312
TELE: 255-1777	DRAWING NUMBER
	1746

