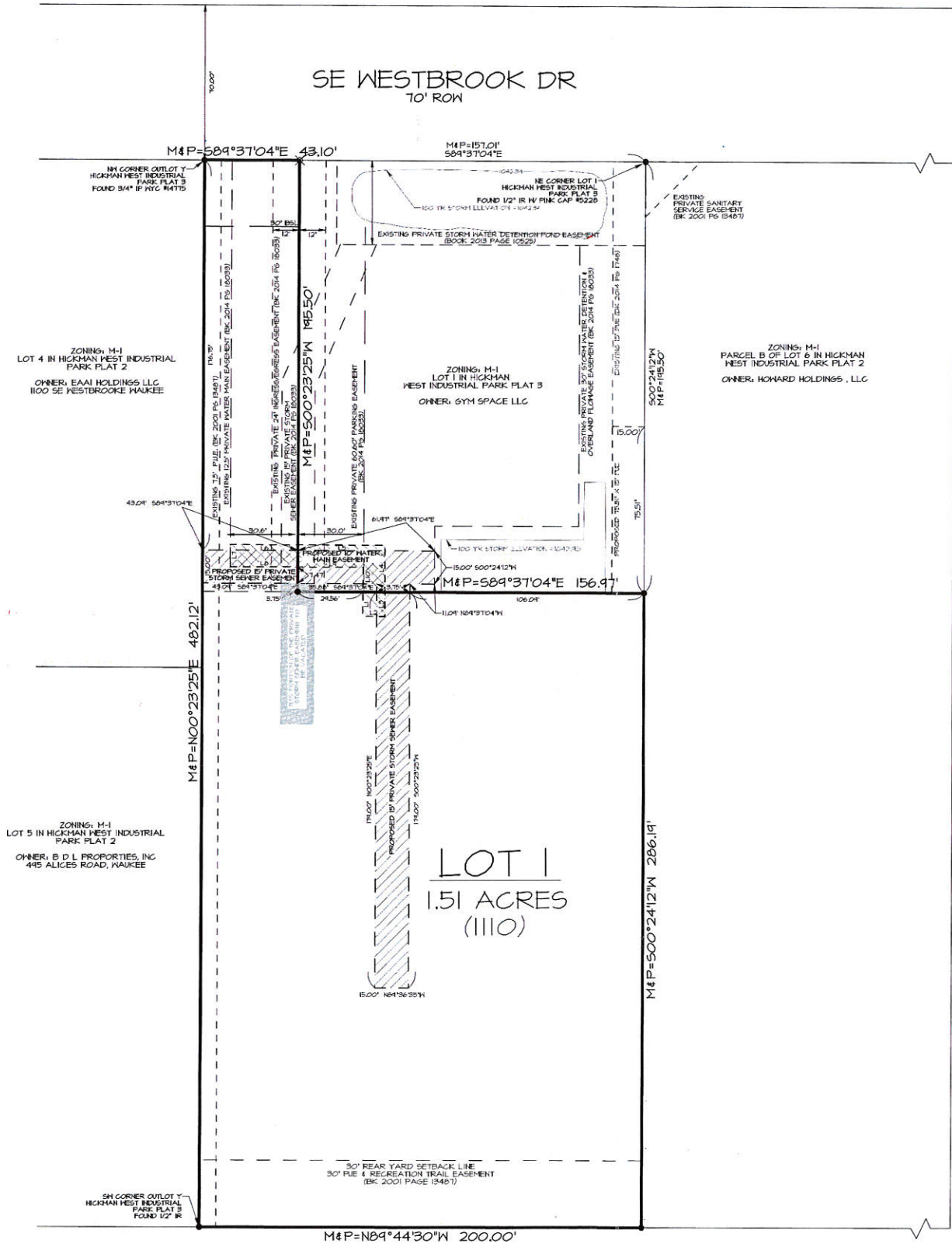


INDEX LEGEND	
LOCATION:	SE WESTBROOK DR, WAUKEE, IA OUTLOT Y HICKMAN WEST INDUSTRIAL PARK PLAT 3
REQUESTOR:	CY PHILLIPS (STORAGE SPACE LLC)
PROPRIETOR:	STORAGE SPACE LLC
SURVEYOR:	GREGORY L. ROSS, IA PLS NO. 13286
COMPANY:	ASSOCIATED ENGINEERING COMPANY OF IOWA 1830 SE PRINCETON DR, SUITE M GRIMES, IA 50111
RETURN TO:	ASSOCIATED ENGINEERING COMPANY OF IOWA 1830 SE PRINCETON DR, SUITE M GRIMES, IA 50111

AREA ABOVE FOR RECORDATION ONLY



FINAL PLAT HICKMAN WEST INDUSTRIAL PARK PLAT 4 SHEET 1 OF 1

OWNER/DEVELOPER

STORAGE SPACE, LLC
15622 WILDEN DR.
URBANDALE, IA 50323
PHONE #: (515) 422-4731

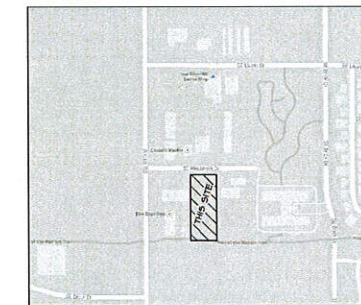
ZONING

M-1 (Light Industrial District)
SETBACKS:
FRONT: 30'
SIDES: NONE
REAR: 30'

LEGAL DESCRIPTION

OUTLOT Y IN HICKMAN WEST INDUSTRIAL PARK PLAT 3, AN OFFICIAL PLAT, NOW INCLUDED IN AND FORMING A PART OF THE CITY OF WAUKEE, DALLAS COUNTY, IOWA. SAID PARCEL CONTAINS 1.51 ACRES.

VICINITY SKETCH



APPROVED

APPROVED BY City Council

DATE 10/17/2016

SIGNED William D. Schmidt

CERTIFICATION

I HEREBY CERTIFY THAT THE FINAL SURVEYING DOCUMENT WAS PREPARED BY ME AND THE ALIEN SURVEYING BOARD HAS REVIEWED AND APPROVED THE SAME IN ACCORDANCE WITH THE IOWA SURVEYING ACT AND THE IOWA SURVEYING BOARD HAS REVIEWED AND APPROVED THE SAME IN ACCORDANCE WITH THE IOWA SURVEYING ACT AND THE IOWA SURVEYING BOARD HAS REVIEWED AND APPROVED THE SAME IN ACCORDANCE WITH THE IOWA SURVEYING ACT.

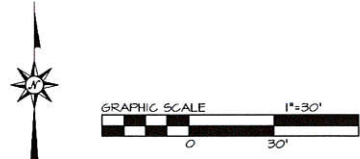
WITNESSED AND APPROVED BY ME AND THE ALIEN SURVEYING BOARD THIS 17th DAY OF OCTOBER, 2016.

GREGORY L. ROSS
PLS. 13286

2/9/17

LEGEND

- MONUMENT FOUND AS NOTED
- SET 1/2" IR IN ORANGE CAP #13286
- ▲ SECTION CORNER FOUND AS NOTED
- △ SECTION CORNER SET AS NOTED
- M= MEASURED DISTANCE OR BEARING
- P= RECORDED DISTANCE OR BEARING



ZONING: C-1
LOT 1 IN WILLIAMS POINTE PLAT 1
OWNER: WILLIAMS POINTE COMMERCIAL II
650 BRICK DRIVE, WAUKEE

AEC ASSOCIATED ENGINEERING COMPANY OF IOWA
1830 SE PRINCETON DR, STE M GRIMES, IA 50111
PHONE: (515) 255-3156 FAX: (515) 255-3157