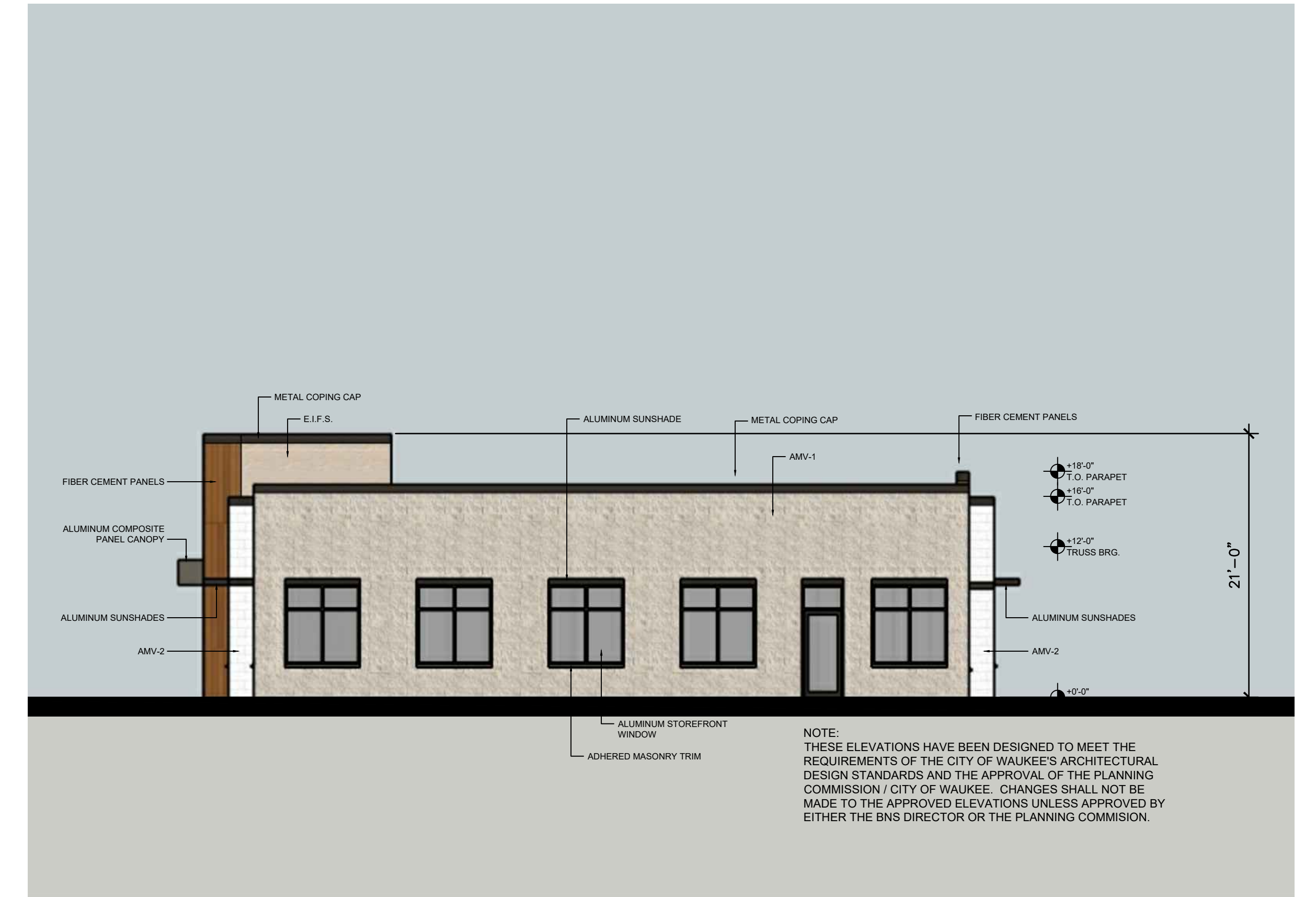




**NORTH ELEVATION w/ FINISHES**

1/8" = 1'-0"



**EAST ELEVATION w/ FINISHES**



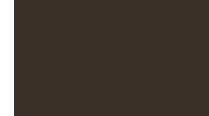



1/8" = 1'-0"



**NORTH-EAST PERSPECTIVE**

NO SCALE

**MATERIAL LEGEND:**

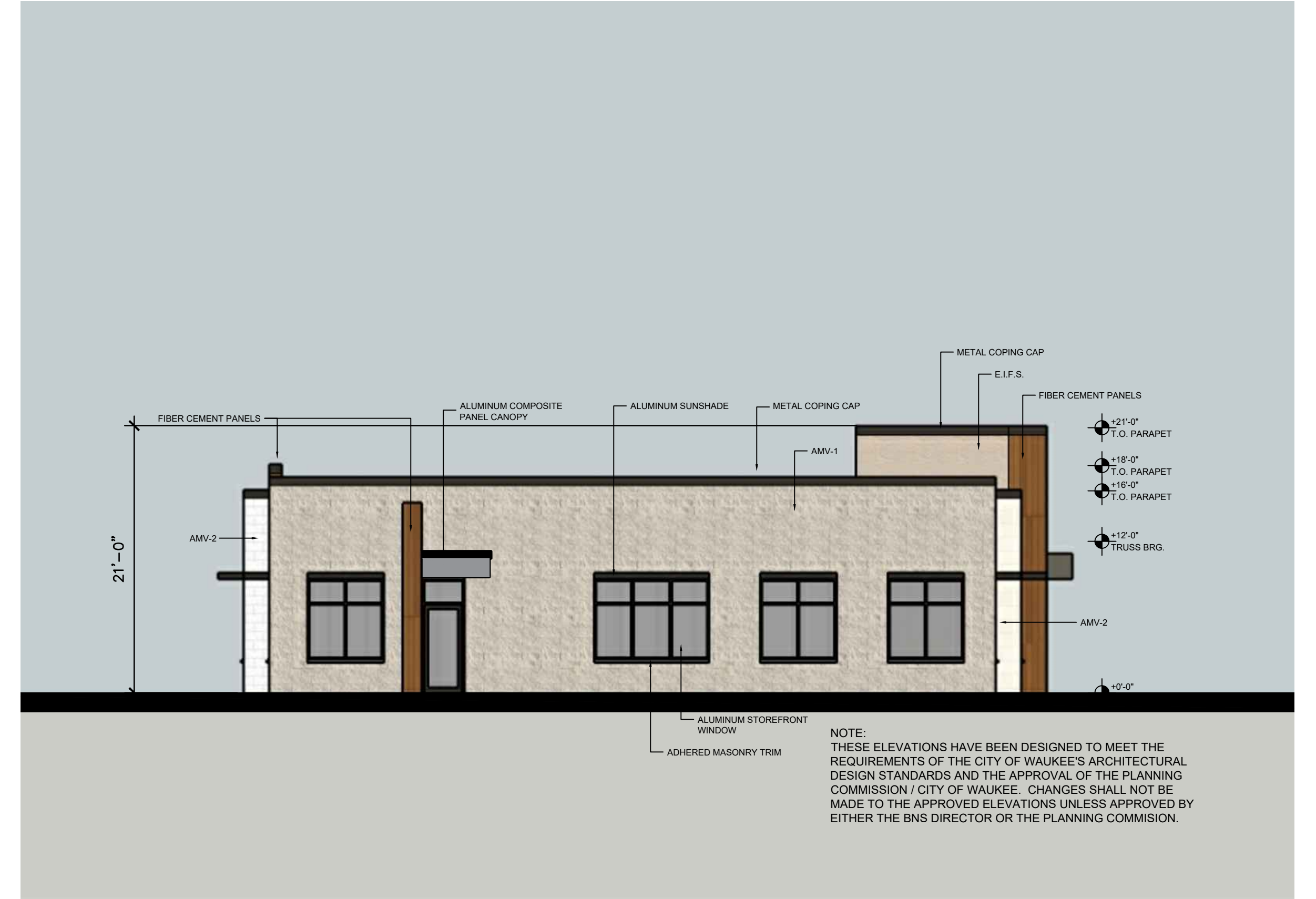
	ADHERED MASONRY VENEER ELDORADO STONE - VANTAGE 30 COLOR: WHITE ELM
	ADHERED MASONRY VENEER ELDORADO STONE - MARQUEE 24 COLOR: DOVE TAIL
	DARK BRONZE ALUMINUM TRIM WINDOW FRAMES, SUNSHADES, SCUPPERS/DOWNSPOUTS TO MATCH
	FIBER CEMENT PANELS NICHINA VINTAGE WOOD WALL PANELS COLOR: CEDAR
	ALUMINUM COMPOSITE PANELS ALPOLIC MICA MFS COLOR: GREY
	EIFS COLOR: SHERWIN WILLIAMS SW7011 (NATURAL CHOICE)

**PERCENTAGE OF EXTERIOR MATERIALS:**

<b>NORTH ELEVATION</b>	
2,378 S.F. NET FACADE TOTAL	
• 1,008 S.F. ADHERED MASONRY VENEER	42%
• 859 S.F. CEMENTITIOUS PANELING	36%
• 511 S.F. GLAZING	22%
• 0 S.F. EIFS	0%
<b>EAST ELEVATION</b>	
1,163 S.F. NET FACADE TOTAL	
• 845 S.F. ADHERED MASONRY VENEER	72%
• 245 S.F. GLAZING	21%
• 42 S.F. CEMENTITIOUS PANELING	4%
• 31 S.F. EIFS	3%



**SOUTH ELEVATION w/ FINISHES**  
1/8" = 1'-0"



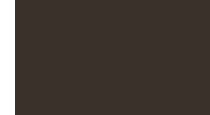





**WEST ELEVATION w/ FINISHES**  
1/8" = 1'-0"



**SOUTH-WEST PERSPECTIVE**  
NO SCALE

**MATERIAL LEGEND:**

-  ADHERED MASONRY VENEER  
ELDORADO STONE - VANTAGE 30  
COLOR: WHITE ELM
-  ADHERED MASONRY VENEER  
ELDORADO STONE - MARQUEE 24  
COLOR: DOVE TAIL
-  DARK BRONZE ALUMINUM TRIM  
WINDOW FRAMES, SUNSHADES,  
SCUPPERS/DOWNSPOUTS TO MATCH
-  FIBER CEMENT PANELS  
NICHINA VINTAGE WOOD WALL PANELS  
COLOR: CEDAR
-  ALUMINUM COMPOSITE PANELS  
ALPOLIC MICA MFS  
COLOR: GREY
-  EIFS  
COLOR: SHERWIN WILLIAMS SW7011 (NATURAL CHOICE)

**PERCENTAGE OF EXTERIOR MATERIALS:**

**SOUTH ELEVATION**  
2,397 S.F. NET FACADE TOTAL

• 1,280 S.F. ADHERED MASONRY VENEER	53%
• 664 S.F. GLAZING	28%
• 453 S.F. CEMENTITIOUS PANELING	19%
• 0 S.F. EIFS	0%

**WEST ELEVATION**  
1,163 S.F. NET FACADE TOTAL

• 833 S.F. ADHERED MASONRY VENEER	71%
• 234 S.F. GLAZING	20%
• 65 S.F. CEMENTITIOUS PANELING	6%
• 31 S.F. EIFS	3%

**IOMS (Stone Prairie - Building 3)**  
SE Westown Pkwy & SE LA Grant Pkwy, Waukee, IA

REVISION

ELEVATIONS +  
FINISH  
SELECTIONS

AJC  
19039  
08.01.2019

AC003